

Supplier's Product Code :
Product Added :
Last Updated by Supplier :
erudus id :

CUPO14
10 April 2026
10 April 2026
1bce487a557b418a82cb99096d114d42



The information on the Erudus System has been supplied by the manufacturers of the products and, whilst the owners of the Erudus System take steps to ensure the information is regularly updated, they give no warranty and no guarantee that the information is accurate. Product information and ingredients may change, please always read product labels carefully in addition to using the information provided by Erudus One.

We do not accept liability for any inaccuracies or incorrect information contained on this site. Please visit <http://www.erudus.com/terms-and-conditions> for full terms and conditions.

CHEF WILLIAM CUSTARD POWDER 4x3.5kg

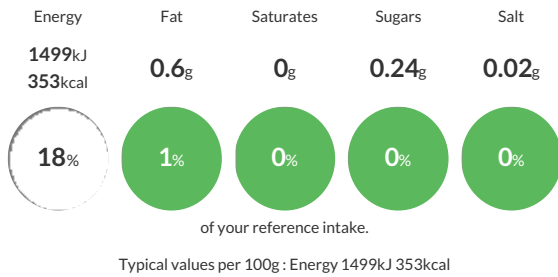
Short Product Name:
CUSTARD POWDER

A dry mix consisting of a blend of starch, flavouring and colouring. The addition of milk and sugar is required, and when reconstituted as instructed, a smooth custard is obtained.

Traded Unit GTIN: 05020933017086 Internal GTIN: 5020933012364 Supplier: Sleaford Quality Foods Suppliers Product Code: CUPO14

Reference Intake

Each 100g portion contains:



Nutritional Information

Typical Values	Per 100g
Energy	1499kJ 353kCal
Carbohydrates	87.93g
of which sugars	0.24g
Fat	0.6g
of which saturates	0g
Fibre	0g
Protein	0.31g
Salt	0.02g

Allergy Information

Key: Contains May Contain



Dietary Information

Key: Suitable for



Ingredients

Maize Starch, Colour: Annatto Norbixin, Flavouring