

Supplier's Product Code :
 Product Added :
 Last Updated by Supplier :
 erudus id :

KOM_SP_12H
 14 January 2026
 26 January 2026
 1be28c47d07e44d0a34aad13a9d56c74



The information on the Erudus System has been supplied by the manufacturers of the products and, whilst the owners of the Erudus System take steps to ensure the information is regularly updated, they give no warranty and no guarantee that the information is accurate. Product information and ingredients may change, please always read product labels carefully in addition to using the information provided by Erudus One.

We do not accept liability for any inaccuracies or incorrect information contained on this site. Please visit <http://www.erudus.com/terms-and-conditions> for full terms and conditions.

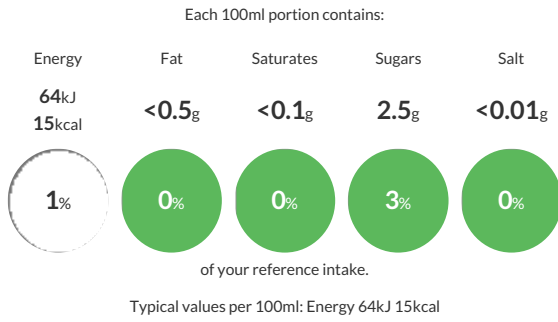
Hip Pop Strawberry & Pineapple Kombucha 12 x 330ml Can

Short Product Name:
 Strawberry & Pineapple Kombucha

Tropical, fruity, and seriously refreshing. Discover sweet strawberries and zingy pineapple in this tropical, lightly sparkling and gut-friendly balance. Hip Pop Kombucha is made with a base of loose leaf tea and is gently fermented, never losing its naturally fruity taste. It's fizzy pop that's refreshingly real.

Traded Unit GTIN: 5060512671018 Internal GTIN: 5060512671001 Supplier : Hip Pop Suppliers Product Code : KOM_SP_12H

Reference Intake



Nutritional Information

Typical Values	Per 100ml
Energy	64kJ 15kCal
Carbohydrates	2.5g
of which sugars	2.5g
Fat	<0.5g
of which saturates	<0.1g
Fibre	-g
Protein	0.6g
Salt	<0.01g

Allergy Information

Key: Contains May Contain

Does Not Contain Cereal/Gluten	Does Not Contain Milk	Does Not Contain Eggs	Does Not Contain Peanuts	Does Not Contain Nuts	Does Not Contain Crustaceans	Does Not Contain Mustard
Does Not Contain Fish	Does Not Contain Lupin	Does Not Contain Sesame	Does Not Contain Celery	Does Not Contain Soya	Does Not Contain Molluscs	Does Not Contain Sulphur Dioxide

Dietary Information

Key: Suitable for

Suitable for Vegetarian	Suitable for Vegan	NO DATA for Kosher	NO DATA for Halal	NO DATA for Coeliac
-------------------------	--------------------	--------------------	-------------------	---------------------

Ingredients

Ingredients: Water, Cane Sugar, Green Tea, Black Tea, Kombucha Culture, Strawberry and Pineapple Juices from Concentrate, Natural Flavourings, Living Cultures (Bacillus Coagulans)