

The information on the [Erudus System](#) has been supplied by the manufacturers of the products and, whilst the owners of the Erudus System take steps to ensure the information is regularly updated, they give no warranty and no guarantee that the information is accurate. Product information and ingredients may change, please always read product labels carefully in addition to using the information provided by Erudus One.

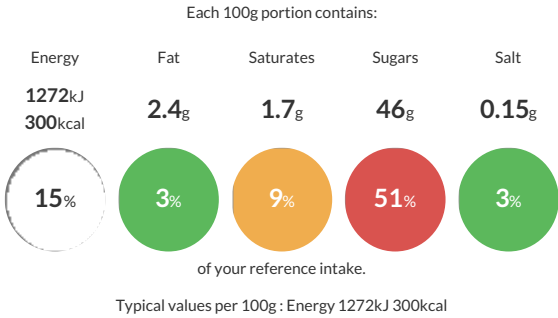
We do not accept liability for any inaccuracies or incorrect information contained on this site. Please visit <http://www.erudus.com/terms-and-conditions> for full terms and conditions.

Mini canelé cake

Short Product Name:
/

Traded Unit GTIN: 03700478517716 Internal GTIN: 03700478517716 Supplier : Traiteur De Paris Suppliers Product Code : 004653

Reference Intake



Nutritional Information

Typical Values	Per 100g
Energy	1272kJ 300kCal
Carbohydrates	66g
of which sugars	46g
Fat	2.4g
of which saturates	1.7g
Fibre	1g
Protein	3.6g
Salt	0.15g

Allergy Information

Key: Contains May Contain


Contains Cereal/Gluten


Contains Milk


Contains Eggs



Does Not Contain Peanuts


Does Not Contain Nuts


Does Not Contain Crustaceans


Does Not Contain Mustard


Does Not Contain Fish


Does Not Contain Lupin


Does Not Contain Sesame


Does Not Contain Celery


Does Not Contain Soya


Does Not Contain Molluscs


Does Not Contain Sulphur Dioxide

Dietary Information

Key: Suitable for


Suitable for Vegetarian


May not be suitable for Vegan


May not be suitable for Kosher


May not be suitable for Halal


May not be suitable for Coeliac

Allergen Statement
CONTAINS cereals containing gluten, milk, eggs.

Ingredients

Water, sugar, **WHEAT** flour (**GLUTEN**), rum 8.5%, milk preparation (whey (**MILK**), vegetable fat (coprah), **MILK** proteins, skimmed **MILK**), whole powdered **EGGS**, vanilla flavouring 0.5%.