

The information on the [Erudus System](#) has been supplied by the manufacturers of the products and, whilst the owners of the Erudus System take steps to ensure the information is regularly updated, they give no warranty and no guarantee that the information is accurate. Product information and ingredients may change, please always read product labels carefully in addition to using the information provided by Erudus One.

We do not accept liability for any inaccuracies or incorrect information contained on this site. Please visit <http://www.erudus.com/terms-and-conditions> for full terms and conditions.

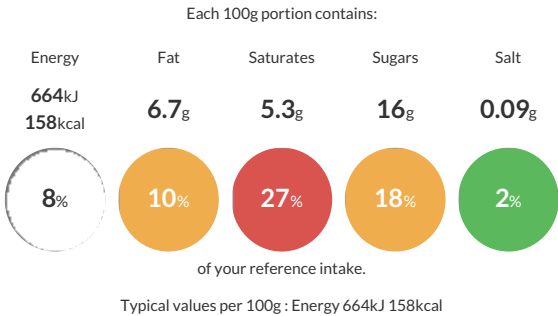
Jude's Plant Based Mint Chocolate - 24 x 100ml

Short Product Name:
Vegan Mint Chocolate Chip Ice Cream

Vegan Mint Ice Cream With Chocolate Pieces And Chocolate Sauce

Traded Unit GTIN: 05060081115586 Internal GTIN: 5060081115494 Supplier : Judes Ices Suppliers Product Code : FI0180

Reference Intake



Nutritional Information

Typical Values	Per 100g
Energy	664kJ 158kCal
Carbohydrates	23g
of which sugars	16g
Fat	6.7g
of which saturates	5.3g
Fibre	-g
Protein	0.9g
Salt	0.09g

Allergy Information

Key: Contains May Contain


Does Not Contain Cereal/Gluten


May Contain Milk


May Contain Eggs


May Contain Peanuts


May Contain Nuts


Does Not Contain Crustaceans


Does Not Contain Mustard


Does Not Contain Fish


Does Not Contain Lupin


Does Not Contain Sesame


Does Not Contain Celery


Contains Soya


Does Not Contain Molluscs


Does Not Contain Sulphur Dioxide

Dietary Information

Key: Suitable for


Suitable for Vegetarian


Suitable for Vegan


May not be suitable for Kosher


May not be suitable for Halal


May not be suitable for Coeliac

Allergen Statement
For allergens see ingredients in **BOLD**. May also contain **MILK, EGG, NUTS, and PEANUT**.

Ingredients

water, chocolate sauce (13%) [sugar, water, chocolate (15%) (cocoa mass, sugar, cocoa butter, emulsifier (**SOYA** lecithin), flavourings), glucose syrup, humectant (glycerine), glucose-fructose syrup, inulin, fat reduced cocoa powder, salt, gelling agent (pectin)], glucose syrup, sugar, coconut oil, chocolate pieces (3.6%) [sugar, cocoa mass, cocoa butter, emulsifier (**SOYA** lecithin), natural vanilla flavouring], soluble corn fibre, **SOYA** protein isolate, dextrose, emulsifier (mono- and diglycerides of fatty acids), stabilisers (locust bean gum, guar gum), sea salt, English peppermint oil, colours (chlorophyllins, curcumin).