

Supplier's Product Code :
 Product Added :
 Last Updated by Supplier :
 erudus id :

FSO-00183
 20 May 2026
 20 May 2026
 1e2a6bc3c9824aa4982420406a6c8e0b



The information on the Erudus System has been supplied by the manufacturers of the products and, whilst the owners of the Erudus System take steps to ensure the information is regularly updated, they give no warranty and no guarantee that the information is accurate. Product information and ingredients may change, please always read product labels carefully in addition to using the information provided by Erudus One.

We do not accept liability for any inaccuracies or incorrect information contained on this site. Please visit <http://www.erudus.com/terms-and-conditions> for full terms and conditions.

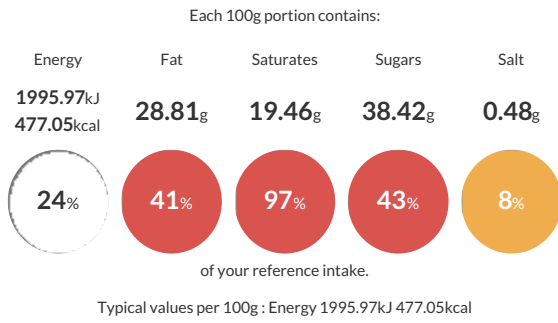
The Homemade Brownie Company - Classic Chocolate Brohnuts ® - 12 x 55g portions

Short Product Name:
 Classic Chocolate Brohnuts ®

Dark Chocolate Brohnut ® with Milk Chocolate Compound Topping and a White Chocolate Compound Drizzle - 2 packs of 6 x 55g portions

Traded Unit GTIN: 15061082481059 Internal GTIN: 5061082481052 Supplier: The Homemade Brownie Company Ltd Suppliers Product Code: FSO-00183

Reference Intake



Nutritional Information

Typical Values	Per 100g
Energy	1995.97kJ 477.05kCal
Carbohydrates	48.39g
of which sugars	38.42g
Fat	28.81g
of which saturates	19.46g
Fibre	1.84g
Protein	3.41g
Salt	0.48g

Allergy Information

Key: Contains May Contain



Gluten Claim

Gluten content is less than 20ppm.

Ingredients

Sugar, Dark Chocolate (19.4%) (Cocoa Mass, Sugar, Cocoa Butter, Emulsifier (Lecithins (Soya)), Natural Vanilla Flavouring), Butter ((Milk), Salt), Egg, Gluten-Free Flour (Rice, Potato, Tapioca, Maize, Buckwheat), Milk Chocolate Compound (11.1%) (Sugar, Fractionated & Totally Hydrogenated Vegetable Fat (Palm Kernel Oil), Whey Milk Powder, Fat Reduced Cocoa Powder, Whole Milk Powder, Emulsifier (E-492, E-322 Sunflower Lecithin) and Flavours), White Chocolate Compound (1.3%) (Sugar, Fractionated and Totally Hydrogenated (Palm Kernel Oil), Whey Milk Powder, Whole Milk Powder, Emulsifier (E-492, E-322 Sunflower Lecithin, E-472C) and Flavours), Baking Powder (Raising Agents (Mono Calcium Phosphate, Sodium Bicarbonate), Corn Starch)

Dietary Information

Key: Suitable for

