

The information on the [Erudus System](#) has been supplied by the manufacturers of the products and, whilst the owners of the Erudus System take steps to ensure the information is regularly updated, they give no warranty and no guarantee that the information is accurate. Product information and ingredients may change, please always read product labels carefully in addition to using the information provided by Erudus One.

We do not accept liability for any inaccuracies or incorrect information contained on this site. Please visit <http://www.erudus.com/terms-and-conditions> for full terms and conditions.

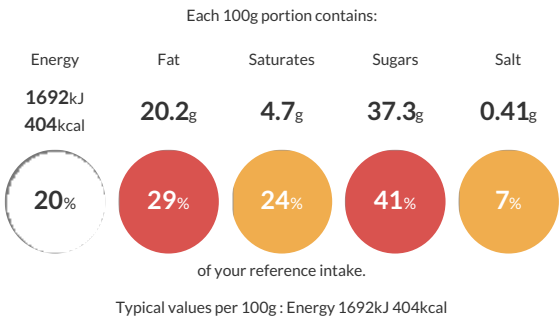
Lemon and Blueberry Cake (pre-cut 1x16)

Short Product Name:
Lemon and Blueberry Cake

A sponge cake baked with blueberries, filled with blueberry deli filling, filled and covered with buttercream frosting finished with white chocolate shavings and freeze-dried blueberries.

Traded Unit GTIN: **5060082387654** Internal GTIN: Supplier: **Sussex Bakes Ltd (More Food)** Suppliers Product Code: **WS358**

Reference Intake



Nutritional Information

Typical Values	Per 100g
Energy	1692kJ 404kCal
Carbohydrates	51.8g
of which sugars	37.3g
Fat	20.2g
of which saturates	4.7g
Fibre	0.8g
Protein	3.4g
Salt	0.41g

Allergy Information

Key: **Contains** **May Contain**


Contains Cereal/Gluten


Contains Milk


Contains Eggs


Does Not Contain Peanuts


May Contain Nuts


Does Not Contain Crustaceans


Does Not Contain Mustard


Does Not Contain Fish


Does Not Contain Lupin


Does Not Contain Sesame


Does Not Contain Celery


Contains Soya


Does Not Contain Molluscs


Does Not Contain Sulphur Dioxide

Dietary Information

Key: **Suitable for**


Suitable for Vegetarian


May not be suitable for Vegan


May not be suitable for Kosher


May not be suitable for Halal


NO DATA for Coeliac

Ingredients

Sugar, Wheat Flour (WHEAT Flour, Calcium Carbonate, Iron, Niacin, Thiamin), Pasteurised Whole EGG, Rapeseed Oil, Margarine (Vegetable Oils (Palm, Rapeseed), Water, Emulsifier (Mono- and Diglycerides of Fatty Acids)), Water, Blueberry Fruit Filling (7%) (Blueberry (60%), Water, Sugar, Modified Starch, Citric Acid, Natural Flavouring, Preservative (Potassium Sorbate)), **IQF** Blueberries (1.5%), Lemon Flavour Curd, (Glucose-Fructose Syrup, Sugar, Water, Margarine (Palm Oil, Rapeseed Oil, Water, Palm Stearin), Cornflour, Acidity Regulators (Citric Acid, Trisodium Citrate), Dried Whole EGG, Gelling Agent (Pectin), Colours (Lutein, Curcumin), Natural Flavouring), Butter (MILK), WHEAT Starch, Lemon Juice (Lemon Juice, Preservative (Potassium Metabisulphate)), Humectant (Glycerol), Raising Agents (Disodium Diphosphate, Potassium Carbonates, Sodium Hydrogen Carbonate), Modified Potato Starch, Whey Powder (MILK), Emulsifiers (Mono- and Diglycerides of Fatty Acids, Sodium Stearoyl-2-lactylate), WHEAT Gluten, Salt, White Chocolate Shavings (Sugar, Cocoa Butter, Whole MILK Powder, Lactose (MILK), Whey Powder (MILK), Emulsifier (SOYA Lecithin), Vanilla Extract), Lemon Zest, Stabilisers (Sodium Carboxy Methyl Cellulose, Guar Gum), Natural Flavouring, Colours (Spirulina Extract, Anthocyanins), Freeze-Dried Blueberries.