

Supplier's Product Code :  
Product Added :  
Last Updated by Supplier :  
erudus id :

SALCAR4X5  
05 May 2026  
05 May 2026  
20712187fd644ed9b5f957f80af57ccb



The information on the Erudus System has been supplied by the manufacturers of the products and, whilst the owners of the Erudus System take steps to ensure the information is regularly updated, they give no warranty and no guarantee that the information is accurate. Product information and ingredients may change, please always read product labels carefully in addition to using the information provided by Erudus One.

We do not accept liability for any inaccuracies or incorrect information contained on this site. Please visit <http://www.erudus.com/terms-and-conditions> for full terms and conditions.

## Sea Salted Caramel Ice Cream : 4X5L

Short Product Name:

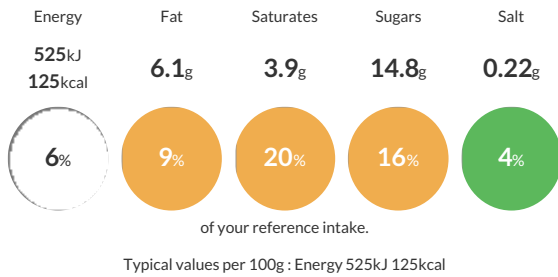
Sea Salted Caramel Ice Cream

A sumptuously sweet caramel ripple, accentuated by the subtle bitterness of salt, permeates this smooth, rich caramel flavoured ice cream for a bitter-sweet taste to tantalise the taste buds.

Traded Unit GTIN: 5060016674393 | Internal GTIN: 5060016674386 | Supplier: Yorvale Ltd | Suppliers Product Code: SALCAR4X5

### Reference Intake

Each 100g portion contains:



### Nutritional Information

Typical Values	Per 100g
Energy	525kJ 125kCal
Carbohydrates	16.1g
of which sugars	14.8g
Fat	6.1g
of which saturates	3.9g
Fibre	0.06g
Protein	2.3g
Salt	0.22g

### Allergy Information

Key: Contains May Contain



### Dietary Information

Key: Suitable for



### Allergen Statement

This product has been produced in a factory that uses nut ingredients.

### Ingredients

Whole **MILK**, Double Cream (**MILK**), Sugar, Salted Caramel Sauce (8.4%)(Water, Golden Syrup, Sugar, Sweetened Condensed Skimmed **MILK**, Colour: Plain Caramel, Salted Butter (**MILK**), Stabiliser: Native Starch, Double Cream (**MILK**), Sea Salt), Skimmed **MILK** Powder, Salted Butterscotch Pieces (Sugar, Glucose Syrup, Brown Sugar (Sugar, Cane Molasses), Non-Hydrogenated Vegetable Fat SG (Shea Oil, Palm Oil, Emulsifier: Sunflower Lecithin), Salt, Butter (**MILK**), Water, Palm Oil SG, Sweetened Condensed Skimmed **MILK** (**MILK**), Sugar, **LACTOSE**), Vegetable Oil SG (Palm Stearin), Emulsifier: E322 (**SOYA**), Icing Sugar (Sugar, Anticaking Agent: E341 iii), Natural Flavouring), Glucose Syrup, Emulsifier: Mono- and Diglycerides of Fatty Acids, Stabilisers (Guar Gum, Carrageenan, Locust Bean Gum), Natural Flavouring, Colour: Plain Caramel.