

The information on the [Erudus System](#) has been supplied by the manufacturers of the products and, whilst the owners of the Erudus System take steps to ensure the information is regularly updated, they give no warranty and no guarantee that the information is accurate. Product information and ingredients may change, please always read product labels carefully in addition to using the information provided by Erudus One.

We do not accept liability for any inaccuracies or incorrect information contained on this site. Please visit <http://www.erudus.com/terms-and-conditions> for full terms and conditions.

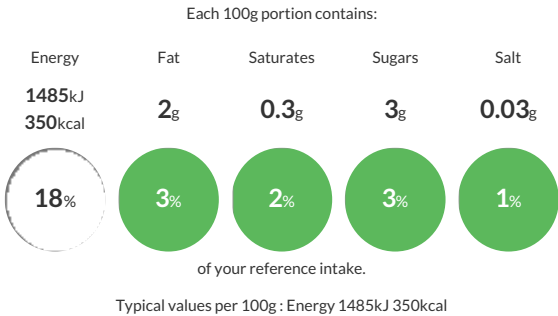
COUS COUS 4x3kg

Short Product Name:
COUS COUS

Granular golden yellow product with bland odour. A precooked, dried pasta made with 100% durum wheat semolina.

Traded Unit GTIN: 05020933135599 Internal GTIN: 5020933130600 Supplier : Sleaford Quality Foods Suppliers Product Code : COUS12KG

Reference Intake



Nutritional Information

Typical Values	Per 100g
Energy	1485kJ 350kCal
Carbohydrates	68g
of which sugars	3g
Fat	2g
of which saturates	0.3g
Fibre	4.2g
Protein	13g
Salt	0.03g

Allergy Information

Key: Contains May Contain



Contains Cereal/Gluten



Does Not Contain Milk



Does Not Contain Eggs



Does Not Contain Peanuts



Does Not Contain Nuts



Does Not Contain Crustaceans



Does Not Contain Mustard



Does Not Contain Fish



Does Not Contain Lupin



Does Not Contain Sesame



Does Not Contain Celery



Does Not Contain Soya



Does Not Contain Molluscs



Does Not Contain Sulphur Dioxide

Allergen Statement
Contains Wheat

Ingredients

Durum WHEAT Semolina.

Dietary Information

Key: Suitable for



Suitable for Vegetarian



Suitable for Vegan



May not be suitable for Kosher



May not be suitable for Halal



May not be suitable for Coeliac