

The information on the [Erudus System](#) has been supplied by the manufacturers of the products and, whilst the owners of the Erudus System take steps to ensure the information is regularly updated, they give no warranty and no guarantee that the information is accurate. Product information and ingredients may change, please always read product labels carefully in addition to using the information provided by Erudus One.

We do not accept liability for any inaccuracies or incorrect information contained on this site. Please visit <http://www.erudus.com/terms-and-conditions> for full terms and conditions.

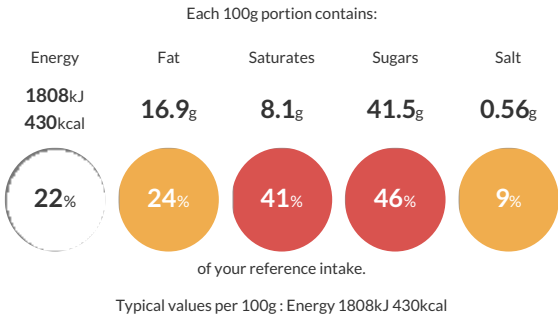
1126-10 - Chocolate Brownie Tray (Pre-Cut 10 Portion)

Short Product Name:
Chocolate Brownie Tray

A rich and moist baked chocolate brownie sponge.

Traded Unit GTIN: 5060622441730 Internal GTIN: Supplier : Eatons Patisserie Suppliers Product Code : 1126-10 187132

Reference Intake



Nutritional Information

Typical Values	Per 100g
Energy	1808kJ 430kCal
Carbohydrates	62.4g
of which sugars	41.5g
Fat	16.9g
of which saturates	8.1g
Fibre	3.2g
Protein	5.1g
Salt	0.56g

Allergy Information

Key: Contains May Contain


Contains Cereal/Gluten


Contains Milk


Contains Eggs


Does Not Contain Peanuts


May Contain Nuts


Does Not Contain Crustaceans


Does Not Contain Mustard


Does Not Contain Fish


Does Not Contain Lupin


Does Not Contain Sesame


Does Not Contain Celery


Contains Soya


Does Not Contain Molluscs


Does Not Contain Sulphur Dioxide

Dietary Information

Key: Suitable for


Suitable for Vegetarian


May not be suitable for Vegan


May not be suitable for Kosher


May not be suitable for Halal


NO DATA for Coeliac

Ingredients

Brownie Cake Mix (66%) [Sugar, **WHEAT** Flour (With Calcium, Iron, Niacin, Thiamin), Vegetable Oil (Palm, Rapeseed), Fat Reduced Cocoa Powder (4.5%), Glucose Syrup, Whole **EGG** Powder, Emulsifier (E471), Salt, Raising Agents (Sodium Bicarbonate), Flavouring, Whey Solids (**MILK**)], Dark Chocolate (15%) [Cocoa Mass, Sugar, Cocoa Butter, Emulsifier (**SOYA** Lecithin), Natural Vanilla Flavouring], Water.