

The information on the [Erudus System](#) has been supplied by the manufacturers of the products and, whilst the owners of the Erudus System take steps to ensure the information is regularly updated, they give no warranty and no guarantee that the information is accurate. Product information and ingredients may change, please always read product labels carefully in addition to using the information provided by Erudus One.

We do not accept liability for any inaccuracies or incorrect information contained on this site. Please visit <http://www.erudus.com/terms-and-conditions> for full terms and conditions.

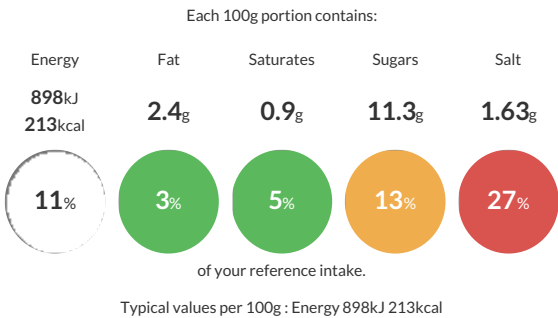
Cocktail Duck Roll 35g x 25

Short Product Name:
Cocktail Duck Roll

Succulent shredded duck and spring onions in a rich hoi sin sauce, hand rolled in crisp pastry

Traded Unit GTIN: **5060058030393** Internal GTIN: Supplier: **Scheff Foods Ltd** Suppliers Product Code: **CDR35**

Reference Intake



Nutritional Information

Typical Values	Per 100g
Energy	898kJ 213kCal
Carbohydrates	42.4g
of which sugars	11.3g
Fat	2.4g
of which saturates	0.9g
Fibre	1.5g
Protein	5.4g
Salt	1.63g

Allergy Information

Key: **Contains** **May Contain**



Contains Cereal/Gluten



Does Not Contain Milk



Does Not Contain Eggs



Does Not Contain Peanuts



May Contain Nuts



Does Not Contain Crustaceans



Does Not Contain Mustard



Does Not Contain Fish



Does Not Contain Lupin



Contains Sesame



Does Not Contain Celery



Contains Soya



Does Not Contain Molluscs



Does Not Contain Sulphur Dioxide

Dietary Information

Key: **Suitable for**



May not be suitable for Vegetarian



May not be suitable for Vegan



May not be suitable for Kosher



May not be suitable for Halal



NO DATA for Coeliac

Ingredients

Pastry (Contains: **WHEAT** Flour, Water, Coconut Oil, Salt), Cooked Duck (17%) (Contains: Salt, Sugar, Spices), Onion, Hoi Sin Sauce (Contains: Sugar, **SOYA** Sauce [**WHEAT**], Rice Vinegar, Water, Garlic, Koji, Salt, Spices, Colour E150a, **SESAME** Oil, Chilli), Spring Onion, Garlic Puree, Fortified **WHEAT** Flour (Contains: Calcium Carbonate, Iron, Niacin, Thiamin), Sugar, Cornflour, Flavouring (Contains: Salt, Flavouring [**BARLEY**], Sugar, Maltodextrin)