

The information on the [Erudus System](#) has been supplied by the manufacturers of the products and, whilst the owners of the Erudus System take steps to ensure the information is regularly updated, they give no warranty and no guarantee that the information is accurate. Product information and ingredients may change, please always read product labels carefully in addition to using the information provided by Erudus One.

We do not accept liability for any inaccuracies or incorrect information contained on this site. Please visit <http://www.erudus.com/terms-and-conditions> for full terms and conditions.

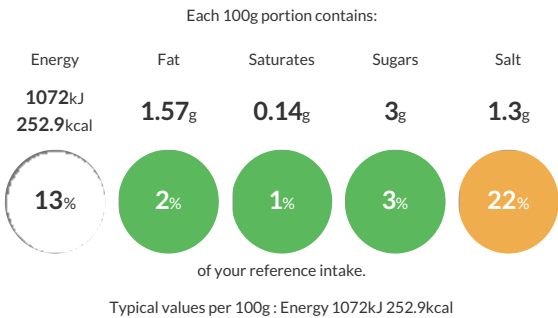
24 CIABATTA RUSTIQUE 280G

Short Product Name:  
CIABATTA RUSTIQUE

NA

Traded Unit GTIN: 3516870108700 Internal GTIN: Supplier : Planète Pain Suppliers Product Code : 10870 - PPR250

Reference Intake



Nutritional Information

Typical Values	Per 100g
Energy	1072kJ 252.9kCal
Carbohydrates	51.91g
of which sugars	3g
Fat	1.57g
of which saturates	0.14g
Fibre	-g
Protein	7.79g
Salt	1.3g

Allergy Information

Key: Contains May Contain

  
Contains  
Cereal/Gluten

  
Does Not  
Contain  
Milk

  
May Contain  
Eggs

  
Does Not  
Contain  
Peanuts

  
Does Not  
Contain  
Nuts

  
Does Not  
Contain  
Crustaceans

  
Does Not  
Contain  
Mustard

  
Does Not  
Contain  
Fish

  
Does Not  
Contain  
Lupin

  
May Contain  
Sesame

  
Does Not  
Contain  
Celery

  
Does Not  
Contain  
Soya

  
Does Not  
Contain  
Molluscs

  
Does Not  
Contain  
Sulphur  
Dioxide

Dietary Information

Key: Suitable for

  
Suitable for  
Vegetarian

  
May not be  
suitable for  
Vegan

  
Suitable for  
Kosher

  
Suitable for  
Halal

  
May not be  
suitable for  
Coeliac

Ingredients

WHEAT flour, water, salt, yeast, WHEAT GLUTEN, devitalized dehydrated WHEAT sourdough, malted WHEAT flour, hydrolyzed WHEAT proteins, enzymes.