

Supplier's Product Code :
Product Added :
Last Updated by Supplier :
erudus id :

SW00003 - ECPVJ/5
02 April 2024
02 April 2024
220c3d7d1ed34eccbb893fec9e58676b



The information on the [Erudus System](#) has been supplied by the manufacturers of the products and, whilst the owners of the Erudus System take steps to ensure the information is regularly updated, they give no warranty and no guarantee that the information is accurate. Product information and ingredients may change, please always read product labels carefully in addition to using the information provided by Erudus One.

We do not accept liability for any inaccuracies or incorrect information contained on this site. Please visit <http://www.erudus.com/terms-and-conditions> for full terms and conditions.

Premier Veal Jus 1kg

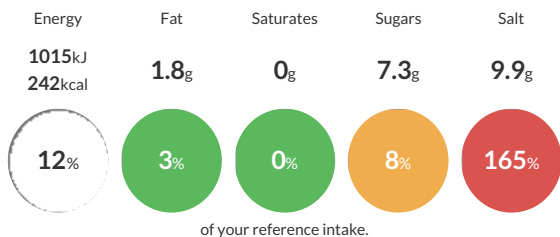
Short Product Name:
Veal Jus

A composite paste, produced by the blending of food ingredients. A dark brown coloured viscous paste, with a distinctive odour of veal. It has the characteristic appearance and flavour of Veal Jus when reconstituted with water as directed.

Traded Unit GTIN: **05029540000269** Internal GTIN: **5029540000252** Supplier: **Essential Cuisine Limited** Suppliers Product Code: **SW00003 - ECPVJ/5**

Reference Intake

Each 100g portion contains:



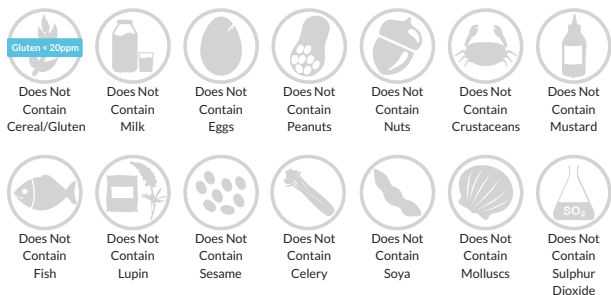
Typical values per 100g : Energy 1015kJ 242kcal

Nutritional Information

| Typical Values | Per 100g |
|--------------------|-------------------|
| Energy | 1015kJ 242kCal |
| Carbohydrates | 30.7g |
| of which sugars | 7.3g |
| Fat | 1.8g |
| of which saturates | 0g |
| Fibre | 0g |
| Protein | 25.6g |
| Salt | 9.9g |

Allergy Information

Key: **Contains** **May Contain**



Gluten Claim

Gluten content is less than 20ppm.

Ingredients

Ingredients when reconstituted:

Veal Stock (Water, Veal Juice, Veal Fat, Carrot, Tomato, Mushroom, Garlic), Beef Stock (Water, Beef Stock), Modified Tapioca Starch, Salt, Sugar, Flavouring, Yeast Extract, Colour (Caramel), Sunflower Oil.

Dietary Information

Key: **Suitable for**

