

The information on the [Erudus System](#) has been supplied by the manufacturers of the products and, whilst the owners of the Erudus System take steps to ensure the information is regularly updated, they give no warranty and no guarantee that the information is accurate. Product information and ingredients may change, please always read product labels carefully in addition to using the information provided by Erudus One.

We do not accept liability for any inaccuracies or incorrect information contained on this site. Please visit <http://www.erudus.com/terms-and-conditions> for full terms and conditions.

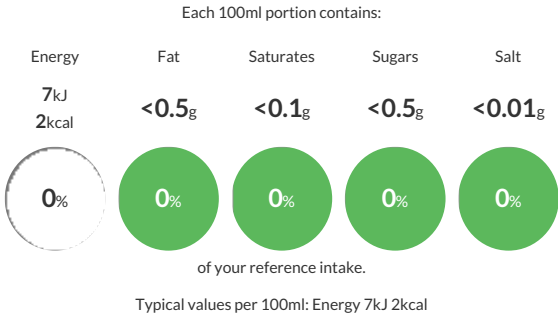
Remedy Drinks Wild Berry 250ml

Short Product Name:
Remedy Kombucha Wild Berry 250ml

Remedy Kombucha Wild Berry 250ml. Wild and free. Untamed berry goodness. Satisfy your thirst with lip-smacking berry boldness that'll sweep you away to a warm summer's day on first sip. Bursting with strawberry, blackberry and blueberry bliss, this sun-ripened blend snogs you goodbye with its smooth caramel and balancing citrus undertones. Sweet, jammy and beautifully aromatic, this boochyberry brew is unprecedently good

Traded Unit GTIN: 29350271002650 Internal GTIN: 9350271002649 Supplier : Remedy Drinks UK Limited Suppliers Product Code : 20251C12026

Reference Intake



Nutritional Information

Typical Values	Per 100ml
Energy	7kJ 2kCal
Carbohydrates	1.6g
of which sugars	<0.5g
Fat	<0.5g
of which saturates	<0.1g
Fibre	<0.5g
Protein	<0.5g
Salt	<0.01g

Allergy Information

Key: Contains May Contain


Does Not Contain Cereal/Gluten


Does Not Contain Milk


Does Not Contain Eggs


Does Not Contain Peanuts


Does Not Contain Nuts


Does Not Contain Crustaceans


Does Not Contain Mustard


Does Not Contain Fish


Does Not Contain Lupin


Does Not Contain Sesame


Does Not Contain Celery


Does Not Contain Soya


Does Not Contain Molluscs


Does Not Contain Sulphur Dioxide

Dietary Information

Key: Suitable for


Suitable for Vegetarian


Suitable for Vegan


Suitable for Kosher


Suitable for Halal


NO DATA for Coeliac

Ingredients

Raw kombucha (carbonated water,sugar*, black tea leaves, green tea leaves, kombucha culture),flavour enhancer: erythritol, hibiscus tea, lemon juice, natural blueberry flavouring, natural strawberry flavouring, natural blackberry flavouring, sweetener (steviol glycosides from stevia), natural caramel flavouring.