

The information on the [Erudus System](#) has been supplied by the manufacturers of the products and, whilst the owners of the Erudus System take steps to ensure the information is regularly updated, they give no warranty and no guarantee that the information is accurate. Product information and ingredients may change, please always read product labels carefully in addition to using the information provided by Erudus One.

We do not accept liability for any inaccuracies or incorrect information contained on this site. Please visit <http://www.erudus.com/terms-and-conditions> for full terms and conditions.

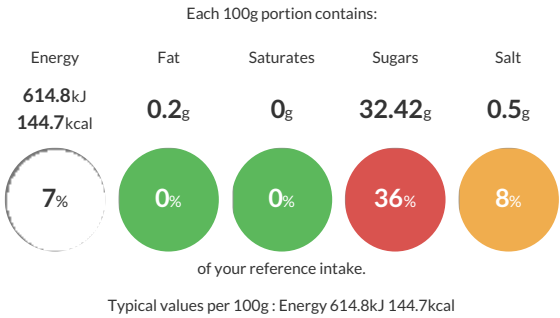
Peach, Apple and Apricot Chutney with Whitstable Bay Ale 1.2kg

Short Product Name:
Peach, Apple and Apricot Chutney with Whitstable Bay Ale

Peach, Apple and Apricot Chutney with Whitstable Bay Ale in 1.2kg catering plastic tub

Traded Unit GTIN:  Internal GTIN:  Supplier :  Suppliers Product Code : 

Reference Intake



Nutritional Information

Typical Values	Per 100g
Energy	614.8kJ 144.7kCal
Carbohydrates	34.7g
of which sugars	32.42g
Fat	0.2g
of which saturates	0g
Fibre	2.02g
Protein	0.9g
Salt	0.5g

Allergy Information

Key:  Contains  May Contain


Contains
Cereal/Gluten


May Contain
Milk


May Contain
Eggs


May Contain
Peanuts


May Contain
Nuts


Does Not
Contain
Crustaceans


May Contain
Mustard


Does Not
Contain
Fish


Does Not
Contain
Lupin


Does Not
Contain
Sesame


May Contain
Celery


Does Not
Contain
Soya


Does Not
Contain
Molluscs


Does Not
Contain
Sulphur
Dioxide

Dietary Information

Key:  Suitable for


Suitable for
Vegetarian


Suitable for
Vegan


May not be
suitable for
Kosher


May not be
suitable for
Halal


NO DATA for
Coeliac

Ingredients

Bramley Apples (28%), Peaches (22%), Whitstable Bay Ale (5%) (**BARLEY**), Apricots (4%), Sugar, Vinegar, Sultanas, , Garlic, Ginger, Black Pepper, Salt, Spices