

Supplier's Product Code :  
 Product Added :  
 Last Updated by Supplier :  
 erudus id :

453976  
 02 June 2026  
 02 June 2026  
 23d0be63aaa5440a8f1ec1780c5e2d4d



The information on the **Erudus System** has been supplied by the manufacturers of the products and, whilst the owners of the Erudus System take steps to ensure the information is regularly updated, they give no warranty and no guarantee that the information is accurate. Product information and ingredients may change, please always read product labels carefully in addition to using the information provided by Erudus One.

We do not accept liability for any inaccuracies or incorrect information contained on this site. Please visit <http://www.erudus.com/terms-and-conditions> for full terms and conditions.

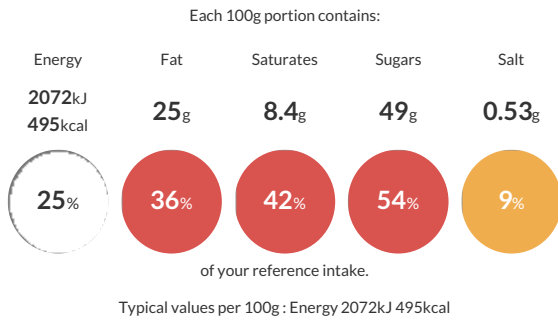
## SNK 48x48g Sngl Everest GB IE

Short Product Name:  
 Snickers Chocolate Bar 48g

Confectionery Bar

Traded Unit GTIN: **5000159551908** Internal GTIN: **5000159551915** Supplier: **Mars** Suppliers Product Code: **453976**

### Reference Intake



### Nutritional Information

Typical Values	Per 100g
Energy	2072kJ 495kCal
Carbohydrates	58g
of which sugars	49g
Fat	25g
of which saturates	8.4g
Fibre	-g
Protein	9.1g
Salt	0.53g

### Allergy Information

Key: **Contains** **May Contain**

Does Not Contain Cereal/Gluten	Contains Milk	Contains Eggs	Contains Peanuts	May Contain Nuts	Does Not Contain Crustaceans	Does Not Contain Mustard
Does Not Contain Fish	Does Not Contain Lupin	Does Not Contain Sesame	Does Not Contain Celery	Contains Soya	Does Not Contain Molluscs	Does Not Contain Sulphur Dioxide

### Dietary Information

Key: **Suitable for**

Suitable for Vegetarian	NO DATA for Vegan	NO DATA for Kosher	NO DATA for Halal	NO DATA for Coeliac
-------------------------	-------------------	--------------------	-------------------	---------------------

### Ingredients

Sugar, Glucose Syrup, **PEANUTS**, Skimmed **MILK** Powder, Cocoa Butter, Cocoa Mass, Sunflower Oil, Palm Fat, Whey Permeate ( **MILK** ), **MILK** Fat, Salt, Emulsifier ( **SOYA** Lecithin), **EGG** White Powder, Milk Chocolate contains Milk Solids 14% minimum, Milk Chocolate contains Vegetable Fats in addition to Cocoa Butter