

The information on the [Erudus System](#) has been supplied by the manufacturers of the products and, whilst the owners of the Erudus System take steps to ensure the information is regularly updated, they give no warranty and no guarantee that the information is accurate. Product information and ingredients may change, please always read product labels carefully in addition to using the information provided by Erudus One.

We do not accept liability for any inaccuracies or incorrect information contained on this site. Please visit <http://www.erudus.com/terms-and-conditions> for full terms and conditions.

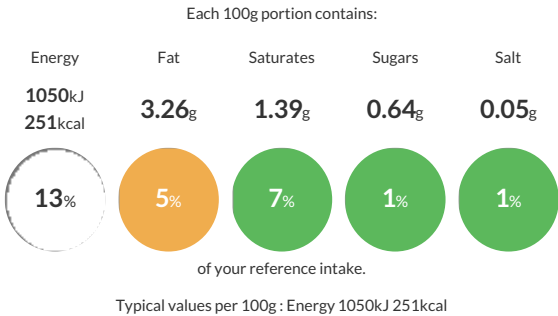
# WHOLE BLACK PEPPERCORNS 6x500g

Short Product Name:  
BLACK PEPPERCORNS

Black pepper is obtained from the small dried berries of the vine Piper nigrum. The berries are picked whilst still green, and sun dried until they turn a deep dark brown colour. The material is heat treated.

Traded Unit GTIN: 5020933028877 Internal GTIN: 5209330238960 Supplier : Sleaford Quality Foods Suppliers Product Code : BLPC500V

## Reference Intake



## Nutritional Information

Typical Values	Per 100g
Energy	1050kJ 251kCal
Carbohydrates	63.95g
of which sugars	0.64g
Fat	3.26g
of which saturates	1.39g
Fibre	25.3g
Protein	10.39g
Salt	0.05g

## Allergy Information

Key: Contains May Contain

  
Does Not Contain Cereal/Gluten

  
Does Not Contain Milk

  
Does Not Contain Eggs

  
Does Not Contain Peanuts

  
Does Not Contain Nuts

  
Does Not Contain Crustaceans

  
Does Not Contain Mustard

  
Does Not Contain Fish

  
Does Not Contain Lupin

  
Does Not Contain Sesame

  
Does Not Contain Celery

  
Does Not Contain Soya

  
Does Not Contain Molluscs

  
Does Not Contain Sulphur Dioxide

**Gluten Claim**  
Gluten content is less than 20ppm.

**Allergen Statement**  
Product does not contain Gluten.

## Ingredients

Black Pepper

## Dietary Information

Key: Suitable for

  
Suitable for Vegetarian

  
Suitable for Vegan

  
May not be suitable for Kosher

  
May not be suitable for Halal

  
Suitable for Coeliac