

Supplier's Product Code :  
Product Added :  
Last Updated by Supplier :  
erudus id :

68183519  
19 March 2024  
19 March 2024  
24ff44f7140d4ae597c9d51791423d31



The information on the [Erudus System](#) has been supplied by the manufacturers of the products and, whilst the owners of the Erudus System take steps to ensure the information is regularly updated, they give no warranty and no guarantee that the information is accurate. Product information and ingredients may change, please always read product labels carefully in addition to using the information provided by Erudus One.

We do not accept liability for any inaccuracies or incorrect information contained on this site. Please visit <http://www.erudus.com/terms-and-conditions> for full terms and conditions.

## FLORA PLANT CREAM 8 X 1L RPK

Short Product Name:

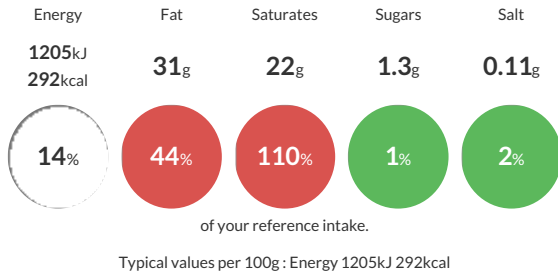
Blend of lentil protein preparation and vegetable fat and oil. For cooking and whipping

Multipurpose, for cooking and whipping, plant based (non dairy). Fat level 31%. \*Non-dairy cream alternative for cooking and whipping. \*Blend of lentil protein preparation and vegetable fat and oil. \*For cooking and whipping.

Traded Unit GTIN: Internal GTIN: **8719200094901** Supplier : **Upfield Foods UK** Suppliers Product Code: **68183519**

### Reference Intake

Each 100g portion contains:



### Nutritional Information

Typical Values	Per 100g
Energy	1205kJ 292kCal
Carbohydrates	2.3g
of which sugars	1.3g
Fat	31g
of which saturates	22g
Fibre	<0.5g
Protein	0.6g
Salt	0.11g

### Allergy Information

Key: **Contains** **May Contain**



Allergen Statement  
N/A

### Dietary Information

Key: **Suitable for**



### Ingredients

Lentil protein preparation (water, 1.1% lentil flour), coconut fat, rapeseed oil, sugar, modified corn starch, emulsifiers (sunflower lecithin, sugar esters of fatty acids, mono- and diglycerides of fatty acids), stabilisers (guar gum, locust bean gum), natural flavouring, salt, colour (beta-carotene).