

The information on the [Erudus System](#) has been supplied by the manufacturers of the products and, whilst the owners of the Erudus System take steps to ensure the information is regularly updated, they give no warranty and no guarantee that the information is accurate. Product information and ingredients may change, please always read product labels carefully in addition to using the information provided by Erudus One.

We do not accept liability for any inaccuracies or incorrect information contained on this site. Please visit <http://www.erudus.com/terms-and-conditions> for full terms and conditions.

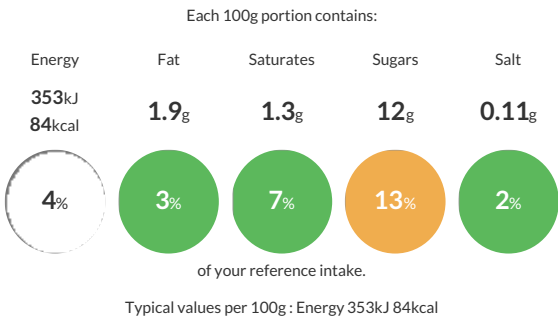
Wall's Mini Milk Strawberry Ice Cream (44x35ml)

Short Product Name:
Mini Milk Strawberry

Strawberry milk ice, enriched with calcium. Gluten Free.

Traded Unit GTIN: **8711327404236** Internal GTIN: **8711327404205** Supplier : **Unilever UK Limited** Suppliers Product Code : **69590821**

Reference Intake



Nutritional Information

Typical Values	Per 100g
Energy	353kJ 84kCal
Carbohydrates	14g
of which sugars	12g
Fat	1.9g
of which saturates	1.3g
Fibre	-g
Protein	2.1g
Salt	0.11g

Allergy Information

Key: **Contains** **May Contain**


Does Not Contain Cereal/Gluten


Contains Milk


Does Not Contain Eggs


May Contain Peanuts


May Contain Nuts


Does Not Contain Crustaceans


Does Not Contain Mustard


Does Not Contain Fish


Does Not Contain Lupin


Does Not Contain Sesame


Does Not Contain Celery


May Contain Soya


Does Not Contain Molluscs


Does Not Contain Sulphur Dioxide

Dietary Information

Key: **Suitable for**


May not be suitable for Vegetarian


May not be suitable for Vegan


May not be suitable for Kosher


May not be suitable for Halal


Suitable for Coeliac

Gluten Claim
Gluten content is less than 20ppm.

Allergen Statement
May contain peanuts, pistachio nuts and soy.
Gluten free.

Ingredients

Fresh whole **MILK** (36%), reconstituted skimmed **MILK** (26%), strawberry puree (10%), glucose-fructose syrup, sugar, calcium carbonate, fructose, whey solids (**MILK**), glucose syrup, butter fat (**MILK**) (1%), flavouring, stabilisers (guar gum, tara gum, locust bean gum, carrageenan), skimmed **MILK** powder, emulsifier (mono- and diglycerides of fatty acids), beetroot juice concentrate.