

The information on the [Erudus System](#) has been supplied by the manufacturers of the products and, whilst the owners of the Erudus System take steps to ensure the information is regularly updated, they give no warranty and no guarantee that the information is accurate. Product information and ingredients may change, please always read product labels carefully in addition to using the information provided by Erudus One.

We do not accept liability for any inaccuracies or incorrect information contained on this site. Please visit <http://www.erudus.com/terms-and-conditions> for full terms and conditions.

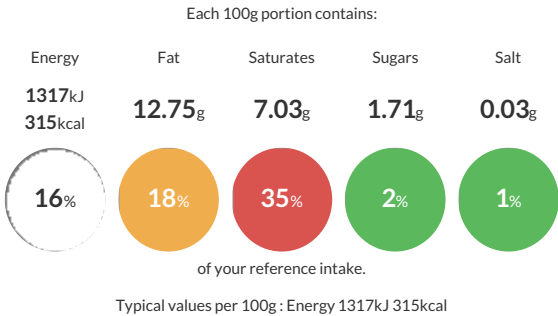
Sage 6x240g

Short Product Name:
Sage

Wild and cultivated Salvia triloba, Salvia officinalis, S.tomentosa; sun dried, machine cleaned, cut, sieved and steam treated.

Traded Unit GTIN: 50209331175714 Internal GTIN: 50209331111040 Supplier : Sleaford Quality Foods Suppliers Product Code : SAGE240V

Reference Intake



Nutritional Information

Typical Values	Per 100g
Energy	1317kJ 315kCal
Carbohydrates	20.43g
of which sugars	1.71g
Fat	12.75g
of which saturates	7.03g
Fibre	40.3g
Protein	10.63g
Salt	0.03g

Allergy Information

Key: Contains May Contain


Does Not Contain Cereal/Gluten


Does Not Contain Milk


Does Not Contain Eggs


Does Not Contain Peanuts


Does Not Contain Nuts


Does Not Contain Crustaceans


Does Not Contain Mustard


Does Not Contain Fish


Does Not Contain Lupin


Does Not Contain Sesame


Does Not Contain Celery


Does Not Contain Soya


Does Not Contain Molluscs


Does Not Contain Sulphur Dioxide

Dietary Information

Key: Suitable for


Suitable for Vegetarian


Suitable for Vegan


Suitable for Kosher


Suitable for Halal


Suitable for Coeliac

Ingredients

Sage