

The information on the [Erudus System](#) has been supplied by the manufacturers of the products and, whilst the owners of the Erudus System take steps to ensure the information is regularly updated, they give no warranty and no guarantee that the information is accurate. Product information and ingredients may change, please always read product labels carefully in addition to using the information provided by Erudus One.

We do not accept liability for any inaccuracies or incorrect information contained on this site. Please visit <http://www.erudus.com/terms-and-conditions> for full terms and conditions.

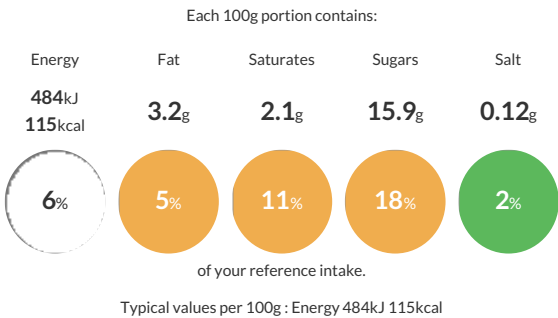
Benugo Honeycomb Ice Cream - 5 litres

Short Product Name:
Honeycomb Ice Cream

Benugo Honeycomb Ice Cream 5 litres

Traded Unit GTIN:  Internal GTIN:  Supplier:  Suppliers Product Code: 

Reference Intake



Nutritional Information

Typical Values	Per 100g
Energy	484kJ 115kCal
Carbohydrates	18.7g
of which sugars	15.9g
Fat	3.2g
of which saturates	2.1g
Fibre	-g
Protein	2.7g
Salt	0.12g

Allergy Information

Key:  Contains  May Contain


Does Not Contain Cereal/Gluten


Contains Milk


Contains Eggs


Does Not Contain Peanuts


Does Not Contain Nuts


Does Not Contain Crustaceans


Does Not Contain Mustard


Does Not Contain Fish


Does Not Contain Lupin


Does Not Contain Sesame


Does Not Contain Celery


Does Not Contain Soya


Does Not Contain Molluscs


Does Not Contain Sulphur Dioxide

Dietary Information

Key:  Suitable for


Suitable for Vegetarian


May not be suitable for Vegan


May not be suitable for Kosher


May not be suitable for Halal


NO DATA for Coeliac

Allergen Statement
For allergens see ingredients in **BOLD**.

Ingredients

Ingredients: fresh whole **milk**, sugar, honeycomb pieces (8%) (sugar, glucose syrup, cocoa butter), skimmed **milk** powder, glucose syrup, fresh double **cream**, honeycomb dust (3%) (sugar, glucose syrup), emulsifier (mono and di glycerides of fatty acids), stabilisers (locust bean gum, guar gum and carrageenan), pasteurised free range **egg** yolk.