

The information on the [Erudus System](#) has been supplied by the manufacturers of the products and, whilst the owners of the Erudus System take steps to ensure the information is regularly updated, they give no warranty and no guarantee that the information is accurate. Product information and ingredients may change, please always read product labels carefully in addition to using the information provided by Erudus One.

We do not accept liability for any inaccuracies or incorrect information contained on this site. Please visit <http://www.erudus.com/terms-and-conditions> for full terms and conditions.

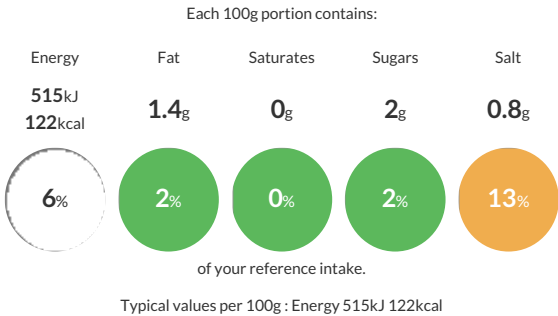
Cooked Chicken Tikka Split Sticks

Short Product Name:
Cooked Chicken Tikka Split Sticks

Fully cooked, gas seared tikka flavoured inner fillets on a Y-shaped wooden skewer.

Traded Unit GTIN: 05060021942838 Internal GTIN: Supplier : The Foodfellas Suppliers Product Code : 285-176

Reference Intake



Nutritional Information

Typical Values	Per 100g
Energy	515kJ 122kCal
Carbohydrates	2.5g
of which sugars	2g
Fat	1.4g
of which saturates	0g
Fibre	-g
Protein	24g
Salt	0.8g

Allergy Information

Key: Contains May Contain


Does Not Contain Cereal/Gluten


Contains Milk


Does Not Contain Eggs


Does Not Contain Peanuts


Does Not Contain Nuts


Does Not Contain Crustaceans


Does Not Contain Mustard


Does Not Contain Fish


Does Not Contain Lupin


Does Not Contain Sesame


Does Not Contain Celery


Does Not Contain Soya


Does Not Contain Molluscs


Does Not Contain Sulphur Dioxide

Dietary Information

Key: Suitable for


May not be suitable for Vegetarian


May not be suitable for Vegan


May not be suitable for Kosher


Suitable for Halal


Suitable for Coeliac

Ingredients

Chicken Breast (93%), Tomato Paste, Whey Powder (**MILK**), Cornflour, Colours (Paprika Extract, Beta Carotene), Sugar, Ginger, Garlic, Rice Bran Oil, Salt, Yoghurt (**MILK**), Coriander Powder, Coriander Leaf, Cumin Powder, Cinnamon Powder, Black Pepper, Mace, Chilli Powder, Star Anise, Turmeric Powder, Basil Leaf