

The information on the [Erudus System](#) has been supplied by the manufacturers of the products and, whilst the owners of the Erudus System take steps to ensure the information is regularly updated, they give no warranty and no guarantee that the information is accurate. Product information and ingredients may change, please always read product labels carefully in addition to using the information provided by Erudus One.

We do not accept liability for any inaccuracies or incorrect information contained on this site. Please visit <http://www.erudus.com/terms-and-conditions> for full terms and conditions.

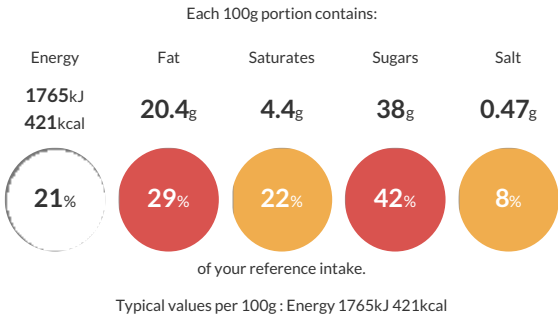
Raspberry Ripple Cake (Pre-cut 1x16)

Short Product Name:
Raspberry Ripple Cake

A sponge baked with pink swirls, filled with buttercream frosting and raspberry jam, and covered with buttercream frosting and raspberry ripple decoration.

Traded Unit GTIN: [5060082388132](#) Internal GTIN: Supplier: [Sussex Bakes Ltd \(More Food\)](#) Suppliers Product Code: [WS391](#)

Reference Intake



Nutritional Information

Typical Values	Per 100g
Energy	1765kJ 421kCal
Carbohydrates	55.3g
of which sugars	38g
Fat	20.4g
of which saturates	4.4g
Fibre	0.7g
Protein	3.8g
Salt	0.47g

Allergy Information

Key: Contains May Contain


Contains
Cereal/Gluten


Contains
Milk


Contains
Eggs


Does Not
Contain
Peanuts


May Contain
Nuts


Does Not
Contain
Crustaceans


Does Not
Contain
Mustard


Does Not
Contain
Fish


Does Not
Contain
Lupin


Does Not
Contain
Sesame


Does Not
Contain
Celery


May Contain
Soya


Does Not
Contain
Molluscs


Does Not
Contain
Sulphur
Dioxide

Dietary Information

Key: Suitable for


May not be
suitable for
Vegetarian


May not be
suitable for
Vegan


May not be
suitable for
Kosher


May not be
suitable for
Halal


NO DATA for
Coeliac

Allergen Statement
Allergy advice: For allergens, Including cereals containing gluten, see ingredients in **BOLD**.
May contain nuts, soya and gluten (from oats and barley).

Ingredients

Sugar, Wheat Flour (**WHEAT **Flour, Calcium Carbonate, Iron, Niacin, Thiamin), Pasteurised Whole **EGG**, Rapeseed Oil, Water, Margarine (Vegetable Oils (Palm, Rapeseed), Water, Emulsifier (Mono- and Diglycerides of Fatty Acids)), Raspberry Jam (6%) (Sugar, Water, Raspberry Purée, Citric Acid, Gelling Agent (Pectin), Acidity Regulator (Trisodium Citrate), Preservative (Potassium Sorbate)), Humectant (Glycerol), **WHEAT **Starch, Butter (**MILK**), Raising Agents Whey Powder (**MILK**), Modified Potato Starch, Emulsifiers (Mono- and Diglycerides of Fatty Acids, Sodium Stearoyl-2-Lactylate), **WHEAT** Gluten, Salt, Colour (Carmine), Stabilisers (Sodium Carboxy Methyl Cellulose, Guar Gum), Freeze-dried Raspberry.