

The information on the [Erudus System](#) has been supplied by the manufacturers of the products and, whilst the owners of the Erudus System take steps to ensure the information is regularly updated, they give no warranty and no guarantee that the information is accurate. Product information and ingredients may change, please always read product labels carefully in addition to using the information provided by Erudus One.

We do not accept liability for any inaccuracies or incorrect information contained on this site. Please visit <http://www.erudus.com/terms-and-conditions> for full terms and conditions.

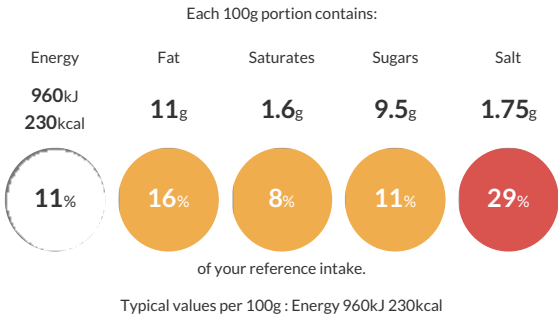
Frozen Raw CHILLI MANGO PRAWNS

Short Product Name:
CHILLI MANGO PRAWNS

Butterflied prawns spread with a spicy mango chilli jam and hand crumbed. Product is par fried with palm oil

Traded Unit GTIN: 19555018503305 Internal GTIN: 9555018503308 Supplier : Pacific West Foods Suppliers Product Code : PMC20PW

Reference Intake



Nutritional Information

Typical Values	Per 100g
Energy	960kJ 230kCal
Carbohydrates	25g
of which sugars	9.5g
Fat	11g
of which saturates	1.6g
Fibre	2.7g
Protein	5.6g
Salt	1.75g

Allergy Information

Key: Contains May Contain


Contains Cereal/Gluten


May Contain Milk


May Contain Eggs


Does Not Contain Peanuts


Does Not Contain Nuts


Contains Crustaceans


Does Not Contain Mustard


May Contain Fish


Does Not Contain Lupin


Does Not Contain Sesame


Does Not Contain Celery


May Contain Soya


May Contain Molluscs


May Contain Sulphur Dioxide

Dietary Information

Key: Suitable for


May not be suitable for Vegetarian


May not be suitable for Vegan


May not be suitable for Kosher


Suitable for Halal


May not be suitable for Coeliac

Ingredients

Prawn (CRUSTACEANS) Stabilisers (E450,E451) (Metapenaeus spp - Caught in Indian Ocean) (35%), Sauce [Sugar, Thickener (E1404), Salt, Citric Acid (E330), Chilli, WHEAT Flour, Mango Flavour, Colour (E100)], Coating [WHEAT Flour, Water, Palm Oil, Thickeners (E1420, E412), Corn Flour, Rice Flour, Salt, Sugar, Raising Agents (E450, E500), Spices, Colour (E160b(i), E160c)].