

Supplier's Product Code :
Product Added :
Last Updated by Supplier :
erudus id :

WM500
09 September 2025
09 September 2025
2af08cc1713846468a99b2bf0ebeaa91



The information on the Erudus System has been supplied by the manufacturers of the products and, whilst the owners of the Erudus System take steps to ensure the information is regularly updated, they give no warranty and no guarantee that the information is accurate. Product information and ingredients may change, please always read product labels carefully in addition to using the information provided by Erudus One.

We do not accept liability for any inaccuracies or incorrect information contained on this site. Please visit <http://www.erudus.com/terms-and-conditions> for full terms and conditions.

BANG! Curry Warm Moghul 6x500g

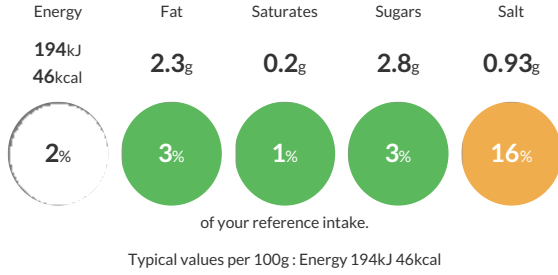
Short Product Name:
Warm Moghul

Elevate your curry with our Warm Moghul spice blend. Just add water for a rich, authentic, time-saving curry paste. Our mellow Moghul is full of spicy flavour, but without the heat. Add with coconut milk or yoghurt to create a Korma sauce.

Traded Unit GTIN: 5060401691400 Internal GTIN: 5060401691332 Supplier: Bang Curry Limited Suppliers Product Code: WM500

Reference Intake

Each 100g portion contains:



Nutritional Information

Typical Values	Per 100g
Energy	194kJ 46kCal
Carbohydrates	4.6g
of which sugars	2.8g
Fat	2.3g
of which saturates	0.2g
Fibre	-g
Protein	0.8g
Salt	0.93g

Allergy Information

Key: Contains May Contain



Dietary Information

Key: Suitable for



Ingredients

Turmeric, coriander, cumin, cardamom, pimento, nutmeg, black pepper, clove, fennel, cassia, bay leaf, salt, sunflower oil, chilli, paprika