

The information on the [Erudus System](#) has been supplied by the manufacturers of the products and, whilst the owners of the Erudus System take steps to ensure the information is regularly updated, they give no warranty and no guarantee that the information is accurate. Product information and ingredients may change, please always read product labels carefully in addition to using the information provided by Erudus One.

We do not accept liability for any inaccuracies or incorrect information contained on this site. Please visit <http://www.erudus.com/terms-and-conditions> for full terms and conditions.

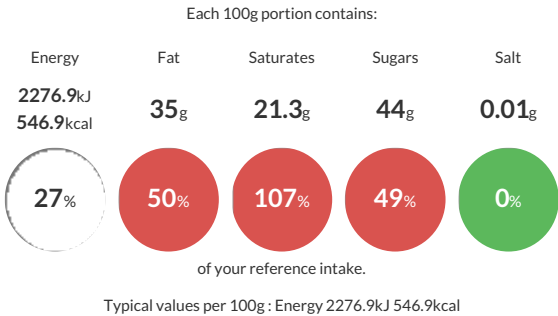
C501J Dark Chocolate Easimelt 5Kg CT 55%

Short Product Name:
CT C501/J DROPS 2X5KG CARTON EP INT

Belcolade Dark Chocolate, Selection, Noir Selection, Sustainable Cacao-Trace

Traded Unit GTIN: - Internal GTIN: 5414477062112 Supplier: HB Ingredients Suppliers Product Code: B.C50ECT5

Reference Intake



Nutritional Information

Typical Values	Per 100g
Energy	2276.9kJ 546.9kCal
Carbohydrates	47.6g
of which sugars	44g
Fat	35g
of which saturates	21.3g
Fibre	7.7g
Protein	5.8g
Salt	0.01g

Allergy Information

Key: Contains May Contain

Gluten < 20ppm
Does Not Contain Cereal/Gluten

Does Not Contain Milk

Does Not Contain Eggs

Does Not Contain Peanuts

Does Not Contain Nuts

Does Not Contain Crustaceans

Does Not Contain Mustard

Does Not Contain Fish

Does Not Contain Lupin

Does Not Contain Sesame

Does Not Contain Celery

Contains Soya

Does Not Contain Molluscs

Does Not Contain Sulphur Dioxide

Gluten Claim
Gluten content is less than 20ppm.

Ingredients

cocoa mass, sugar, cocoa butter, emulsifier (SOY lecithin (E322)), natural vanilla flavouring

Dietary Information

Key: Suitable for

Suitable for Vegetarian

Suitable for Vegan

Suitable for Kosher

Suitable for Halal

Suitable for Coeliac