

Supplier's Product Code :
Product Added :
Last Updated by Supplier :
erudus id :

10008842
22 November 2019
16 June 2023
2d6c60e51bdd48babaf1520e5b0c087e



The information on the **Erudus System** has been supplied by the manufacturers of the products and, whilst the owners of the Erudus System take steps to ensure the information is regularly updated, they give no warranty and no guarantee that the information is accurate. Product information and ingredients may change, please always read product labels carefully in addition to using the information provided by Erudus One.

We do not accept liability for any inaccuracies or incorrect information contained on this site. Please visit <http://www.erudus.com/terms-and-conditions> for full terms and conditions.

Plant-based White Sauce 12 x 1L

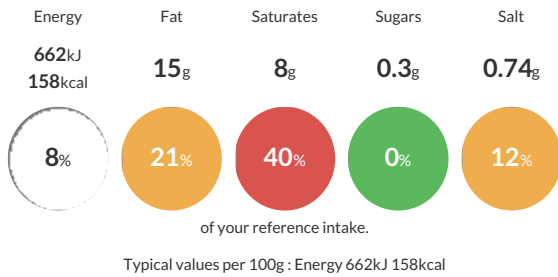
Short Product Name:
Plant-based White Sauce

A versatile heat treated plant-based white sauce made with a blend of vegetable stock and soya flour.

Traded Unit GTIN: **05017506007254** Internal GTIN: **5017506007261** Supplier: **Macphie Ltd** Suppliers Product Code: **10008842**

Reference Intake

Each 100g portion contains:



Nutritional Information

| Typical Values | Per 100g |
|--------------------|------------------|
| Energy | 662kJ 158kCal |
| Carbohydrates | 5.1g |
| of which sugars | 0.3g |
| Fat | 15g |
| of which saturates | 8g |
| Fibre | 0.07g |
| Protein | 1g |
| Salt | 0.74g |

Allergy Information

Key: **Contains** **May Contain**



Gluten Claim

Gluten content is less than 20ppm.

Allergen Statement

Contains: **SOYA**

Ingredients

Reconstituted Vegetable Stock [Water, Salt, Yeast Extract, Maltodextrin, Sugar, Dried Onion, Dried Carrot, Vegetable Oil (Sunflower), Dried Herb], Vegetable Oil (Palm), Modified Starch, **SOYA** Flour, Salt, Emulsifier (**SOYA** Lecithin).

Dietary Information

Key: **Suitable for**

