

The information on the [Erudus System](#) has been supplied by the manufacturers of the products and, whilst the owners of the Erudus System take steps to ensure the information is regularly updated, they give no warranty and no guarantee that the information is accurate. Product information and ingredients may change, please always read product labels carefully in addition to using the information provided by Erudus One.

We do not accept liability for any inaccuracies or incorrect information contained on this site. Please visit <http://www.erudus.com/terms-and-conditions> for full terms and conditions.

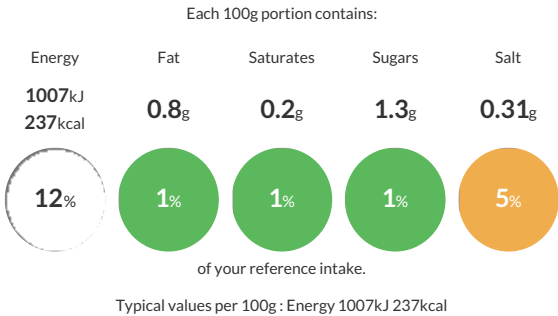
White Pitta Bread 60g (1 x 72)

Short Product Name:
White Pitta Bread 60g (1 x 72)

Fully baked, oval-shaped, white pitta bread. Packed 12 x 6. Suitable for vegetarians and vegans. (1 x 72)

Traded Unit GTIN: **5022558001303** Internal GTIN: Supplier : **Central Foods Group Limited** Suppliers Product Code : **BFL3748**

Reference Intake



Nutritional Information

Typical Values	Per 100g
Energy	1007kJ 237kCal
Carbohydrates	48.1g
of which sugars	1.3g
Fat	0.8g
of which saturates	0.2g
Fibre	2.2g
Protein	8.3g
Salt	0.31g

Allergy Information

Key: **Contains** **May Contain**


Contains Cereal/Gluten


Does Not Contain Milk


Does Not Contain Eggs


Does Not Contain Peanuts


Does Not Contain Nuts


Does Not Contain Crustaceans


Does Not Contain Mustard


Does Not Contain Fish


Does Not Contain Lupin


Does Not Contain Sesame


Does Not Contain Celery


Does Not Contain Soya


Does Not Contain Molluscs


Does Not Contain Sulphur Dioxide

Dietary Information

Key: **Suitable for**


Suitable for Vegetarian


Suitable for Vegan


May not be suitable for Kosher


May not be suitable for Halal


NO DATA for Coeliac

Allergen Statement
For allergens, including cereals containing gluten, see ingredients in **CAPITALS**.

Ingredients

Fortified **WHEAT** Flour (Calcium Carbonate, Niacin, Iron, Thiamin), Water, Yeast, Sugar, Salt, Preservative (Calcium Propionate).