

The information on the [Erudus System](#) has been supplied by the manufacturers of the products and, whilst the owners of the Erudus System take steps to ensure the information is regularly updated, they give no warranty and no guarantee that the information is accurate. Product information and ingredients may change, please always read product labels carefully in addition to using the information provided by Erudus One.

We do not accept liability for any inaccuracies or incorrect information contained on this site. Please visit <http://www.erudus.com/terms-and-conditions> for full terms and conditions.

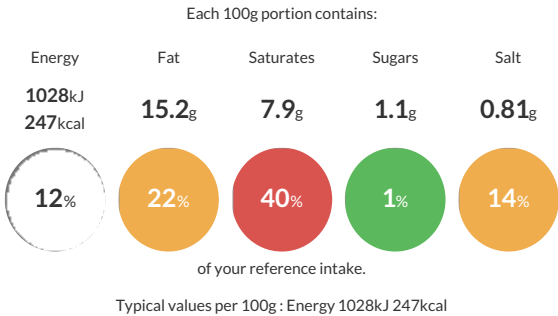
30 TRADITIONAL SHAPED BEEF & VEGETABLE PASTIES

Short Product Name:  
TRADITIONAL SHAPED BEEF & VEGETABLE PASTIES

Frozen unbaked puff pastry casing with a beef and vegetable filling topped with an egg glaze

Traded Unit GTIN: 5060146300285 Internal GTIN: Supplier: David Wood Baking (Medway) Suppliers Product Code : PA2203

Reference Intake



Nutritional Information

Typical Values	Per 100g
Energy	1028kJ 247kCal
Carbohydrates	19.6g
of which sugars	1.1g
Fat	15.2g
of which saturates	7.9g
Fibre	1.7g
Protein	7.3g
Salt	0.81g

Allergy Information

Key: Contains May Contain

  
Contains Cereal/Gluten

  
May Contain Milk

  
Contains Eggs

  
Does Not Contain Peanuts

  
Does Not Contain Nuts

  
Does Not Contain Crustaceans

  
May Contain Mustard

  
Does Not Contain Fish

  
Does Not Contain Lupin

  
Does Not Contain Sesame

  
Does Not Contain Celery

  
Contains Soya

  
Does Not Contain Molluscs

  
Does Not Contain Sulphur Dioxide

Dietary Information

Key: Suitable for

  
May not be suitable for Vegetarian

  
May not be suitable for Vegan

  
May not be suitable for Kosher

  
May not be suitable for Halal

  
NO DATA for Coeliac

Allergen Statement  
May contain traces of milk & mustard

Ingredients

Water, Wheat flour (<b>WHEAT</b> flour, Calcium carbonate, Niacin, Iron, Folic acid, Thiamin), Margarine (Palm oil, Water, Salt, Emulsifier: Mono and di- glycerides of fatty acid (E471)), Beef (9%), Carrot (9%), Potato (5.5%), Dehydrated potato, Textured <b>SOYA</b> protein, <b>EGG</b>, Beef fat, Dehydrated onion, Salt, Beef connective tissue, White pepper, Sage, Thyme, Oregano.

Each baked pasty contains 10% Beef.