

Supplier's Product Code :
Product Added :
Last Updated by Supplier :
erudus id :

CM0012
14 May 2026
14 May 2026
2f6ea6fda1f1457a881238116286b193



The information on the **Erudus System** has been supplied by the manufacturers of the products and, whilst the owners of the Erudus System take steps to ensure the information is regularly updated, they give no warranty and no guarantee that the information is accurate. Product information and ingredients may change, please always read product labels carefully in addition to using the information provided by Erudus One.

We do not accept liability for any inaccuracies or incorrect information contained on this site. Please visit <http://www.erudus.com/terms-and-conditions> for full terms and conditions.

Plain Sponge Mix (2020 Sugar Compliant) 4 x 3.5kg

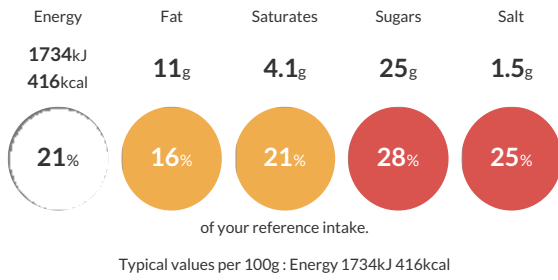
Short Product Name:
Plain Sponge Mix

A plain versatile Sponge Cake Mix suitable for use as a tray bake sponge or individual loaf tin, also suitable for adding fruit, choc chip etc.

Traded Unit GTIN: **5028081002978** Internal GTIN: **5028081002459** Supplier: **Middleton Foods Ltd** Suppliers Product Code: **CM0012**

Reference Intake

Each 100g portion contains:



Nutritional Information

Typical Values	Per 100g
Energy	1734kJ 416kCal
Carbohydrates	73g
of which sugars	25g
Fat	11g
of which saturates	4.1g
Fibre	2.4g
Protein	7.3g
Salt	1.5g

Allergy Information

Key: **Contains** **May Contain**



Dietary Information

Key: **Suitable for**



Ingredients

WHEAT Flour (WHEAT Flour, Calcium Carbonate, Niacin, Iron, Folic Acid, Thiamine), Sugar, Vegetable Oil Blend (Palm & Rapeseed Oil), Dextrose, Whey Powder (MILK), Raising Agents (E500(ii), E450(i)), Dried Whole EGG Powder, Butter MILK Powder, Emulsifier (Glucose Syrup, E472b, E477, SOYA Flour), Leavening Agent (E450(vii), E341(i)), Skimmed MILK Powder, Whey Proteins (MILK), Dried EGG White Powder, Flavouring, Thickener (Xanthan Gum).