

Supplier's Product Code :
Product Added :
Last Updated by Supplier :
erudus id :

BFL5275V
07 April 2026
07 April 2026
3113cdb6bd0f4541ab031bdd0de5a170



The information on the **Erudus System** has been supplied by the manufacturers of the products and, whilst the owners of the Erudus System take steps to ensure the information is regularly updated, they give no warranty and no guarantee that the information is accurate. Product information and ingredients may change, please always read product labels carefully in addition to using the information provided by Erudus One.

We do not accept liability for any inaccuracies or incorrect information contained on this site. Please visit <http://www.erudus.com/terms-and-conditions> for full terms and conditions.

Large Plain Naan 130g (1 x 24)

Short Product Name:

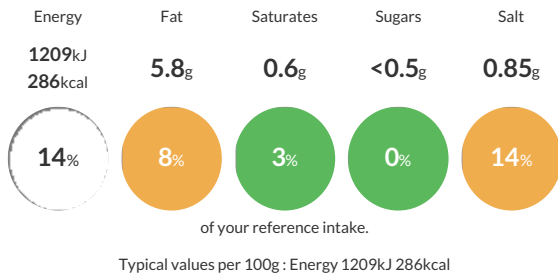
Large Plain Naan 130g (1 x 24)

Fully baked teardrop shaped naan breads with kalonji seeds. (1 x 24)

Traded Unit GTIN: **5022558000900** Internal GTIN: Supplier: **Central Foods Group Limited** Suppliers Product Code: **BFL5275V**

Reference Intake

Each 100g portion contains:



Nutritional Information

Typical Values	Per 100g
Energy	1209kJ 286kCal
Carbohydrates	50.3g
of which sugars	<0.5g
Fat	5.8g
of which saturates	0.6g
Fibre	2.2g
Protein	7.3g
Salt	0.85g

Allergy Information

Key: **Contains** **May Contain**



Dietary Information

Key: **Suitable for**



Ingredients

Fortified WHEAT Flour (WHEAT Flour, Calcium Carbonate, Niacin, Iron, Folic Acid, Thiamin), Water, Rapeseed Oil, Raising Agents (Monocalcium Phosphates, Sodium Bicarbonate), Yeast, Salt, Kalonji Seeds.