

The information on the [Erudus System](#) has been supplied by the manufacturers of the products and, whilst the owners of the Erudus System take steps to ensure the information is regularly updated, they give no warranty and no guarantee that the information is accurate. Product information and ingredients may change, please always read product labels carefully in addition to using the information provided by Erudus One.

We do not accept liability for any inaccuracies or incorrect information contained on this site. Please visit <http://www.erudus.com/terms-and-conditions> for full terms and conditions.

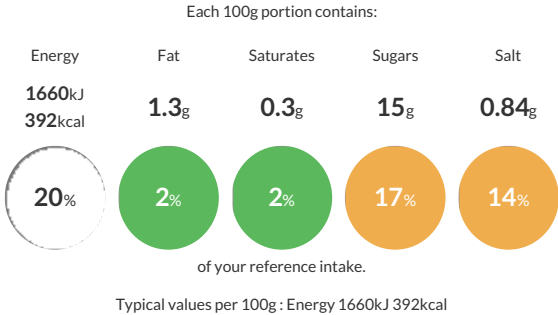
Kellogg's Special K Original Cereal 4x500g Bag Pack

Short Product Name:
Special K Original Cereal

Start your morning with a tasty and nourishing bowl of Kellogg's Special K Original breakfast cereal. A deliciously crunchy combination of multigrain flakes of rice, wholewheat and barley. With a source of fibre, it's made with 38% wholegrain and, rest assured, there are no artificial colours or preservatives. Enjoy a delicious and satisfying breakfast to kickstart your day – unleash your potential and live life at full strength. Everything we're made of powers everything you're made of – #poweringyou. *A serving of Special K cereal contains ≥15% RI vitamin B3 which contributes to normal energy-yielding metabolism. Enjoy as part of a balanced diet & healthy lifestyle.

Traded Unit GTIN: 5053827196345 Internal GTIN: Supplier : Kellanova (Kellogg's) Suppliers Product Code : 5119633000

Reference Intake



Nutritional Information


Typical Values	Per 100g
Energy	1660kJ 392kCal
Carbohydrates	84g
of which sugars	15g
Fat	1.3g
of which saturates	0.3g
Fibre	6g
Protein	8g
Salt	0.84g

Allergy Information

Key: Contains May Contain


Contains Cereal/Gluten



May Contain Milk



Does Not Contain Eggs


Does Not Contain Peanuts


Does Not Contain Nuts



Does Not Contain Crustaceans


Does Not Contain Mustard


Does Not Contain Fish


Does Not Contain Lupin


Does Not Contain Sesame


Does Not Contain Celery


May Contain Soya


Does Not Contain Molluscs


Does Not Contain Sulphur Dioxide

Allergen Statement
May contain milk, soy

Ingredients

Rice (47%), WHOLEWHEAT (37%), sugar, BARLEY (5%), malted BARLEY flour, salt, BARLEY malt extract, niacin, iron, zinc, riboflavin, thiamin, vitamin B6, folic acid, vitamin D, vitamin B12.

Dietary Information

Key: Suitable for


Suitable for Vegetarian


May not be suitable for Vegan


May not be suitable for Kosher


May not be suitable for Halal


NO DATA for Coeliac