

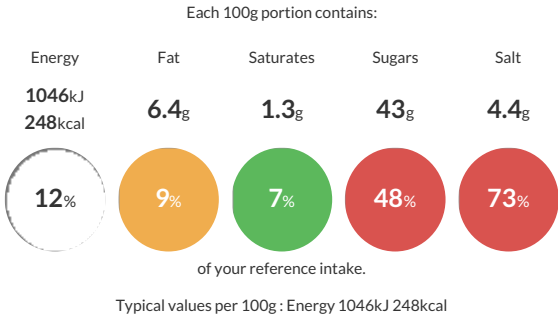
The information on the [Erudus System](#) has been supplied by the manufacturers of the products and, whilst the owners of the Erudus System take steps to ensure the information is regularly updated, they give no warranty and no guarantee that the information is accurate. Product information and ingredients may change, please always read product labels carefully in addition to using the information provided by Erudus One.

We do not accept liability for any inaccuracies or incorrect information contained on this site. Please visit <http://www.erudus.com/terms-and-conditions> for full terms and conditions.

LEE KUM KEE PEKING STYLE SAUCE 2X2.49KG

Short Product Name:
2.49Kg Lee Kum Kee Ready to Use Peking Style Sauce The Professional Range
Traded Unit GTIN: 60078895133280 Internal GTIN: 0078895133288 Supplier : Petty Wood & Co Suppliers Product Code : 619253

Reference Intake



Nutritional Information


Typical Values	Per 100g
Energy	1046kJ 248kCal
Carbohydrates	43g
of which sugars	43g
Fat	6.4g
of which saturates	1.3g
Fibre	0g
Protein	2.6g
Salt	4.4g

Allergy Information

Key: Contains May Contain


Contains Cereal/Gluten


Does Not Contain Milk


Does Not Contain Eggs


Does Not Contain Peanuts


Does Not Contain Nuts


Does Not Contain Crustaceans


Does Not Contain Mustard


Does Not Contain Fish


Does Not Contain Lupin


Contains Sesame


Does Not Contain Celery


Contains Soya


Does Not Contain Molluscs


Does Not Contain Sulphur Dioxide

Dietary Information

Key: Suitable for


Suitable for Vegetarian


Suitable for Vegan


May not be suitable for Kosher


May not be suitable for Halal


May not be suitable for Coeliac

Allergen Statement
PLEASE SEE INGREDIENTS IN BOLD/CAPITALS

Ingredients

Sugar, Fermented Soybean Paste 25% (water, salt,**SOYBEANS, WHEAT** flour). Water, Tomato Paste, Salted Plum 6%, **SESAME** Paste 4%, **SOYBEAN** Oil, Colour E150a, Modified Corn Starch, Spices, Stabilizer E415 (**SOYBEANS, WHEAT**). Flavour Enhancers (E631, E627).