

Supplier's Product Code :  
Product Added :  
Last Updated by Supplier :  
erudus id :

013320P  
26 May 2026  
27 May 2026  
33cf7077186742188e4c6d618fe35a86



The information on the **Erudus System** has been supplied by the manufacturers of the products and, whilst the owners of the Erudus System take steps to ensure the information is regularly updated, they give no warranty and no guarantee that the information is accurate. Product information and ingredients may change, please always read product labels carefully in addition to using the information provided by Erudus One.

We do not accept liability for any inaccuracies or incorrect information contained on this site. Please visit <http://www.erudus.com/terms-and-conditions> for full terms and conditions.

## Purple Pineapple Tuna Mayonnaise and Sweetcorn 2.5kg

Short Product Name:

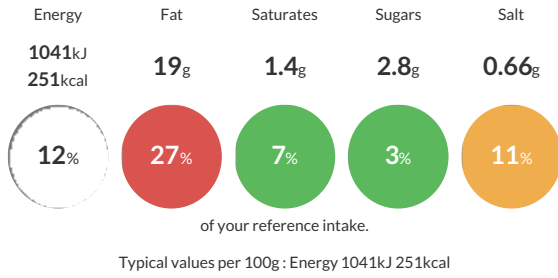
Tuna Mayonnaise and Sweetcorn

Tuna chunks & sweetcorn bound in a free range real mayonnaise

Traded Unit GTIN:  Internal GTIN: Supplier: **Kff Ltd** Suppliers Product Code: **013320P**

### Reference Intake

Each 100g portion contains:



### Nutritional Information

Typical Values	Per 100g
Energy	1041kJ 251kCal
Carbohydrates	5.6g
of which sugars	2.8g
Fat	19g
of which saturates	1.4g
Fibre	0.5g
Protein	14g
Salt	0.66g

### Allergy Information

Key: **Contains** **May Contain**



### Dietary Information

Key: **Suitable for**



### Ingredients

Tuna (55%) [Skipjack Tuna (<b>Fish</b>), Water, Salt], Mayonnaise (30%) [Rapeseed Oil, Water, Sugar, Modified Maize Starch, Free Range <b>Egg</b> Yolk Powder (0.8%), Stabiliser (Xanthan Gum), Salt, Preservatives (Acetic Acid, Potassium Sorbate), Colour (Lutein)], Sweetcorn (15%) [Sweet Corn, Water, Salt, Citric Acid]

**ALLERGY ADVICE:** For allergens, see ingredients in Bold