

The information on the [Erudus System](#) has been supplied by the manufacturers of the products and, whilst the owners of the Erudus System take steps to ensure the information is regularly updated, they give no warranty and no guarantee that the information is accurate. Product information and ingredients may change, please always read product labels carefully in addition to using the information provided by Erudus One.

We do not accept liability for any inaccuracies or incorrect information contained on this site. Please visit <http://www.erudus.com/terms-and-conditions> for full terms and conditions.

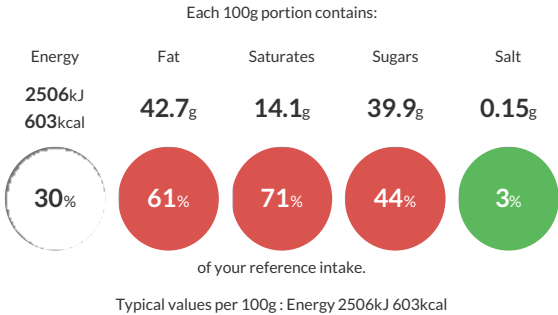
Ferrero Rocher T3 x 16

Short Product Name:
Ferrero Rocher

A case of 16 packs of 3 flow wrapped Ferrero Rocher chocolates. Ferrero Rocher offers a delicious taste experience due to its unique combination of layers and textures. A whole hazelnut surrounded by delicious layers of crispy wafer, a velvety filling, smooth milk chocolate and finely chopped hazelnut pieces.

Traded Unit GTIN: 08000500047873 Internal GTIN: 80050278 Supplier : Ferrero UK Ltd Suppliers Product Code : XGB264003

Reference Intake



Nutritional Information

Typical Values	Per 100g
Energy	2506kJ 603kCal
Carbohydrates	44.4g
of which sugars	39.9g
Fat	42.7g
of which saturates	14.1g
Fibre	-g
Protein	8.2g
Salt	0.15g

Allergy Information

Key: Contains May Contain


Contains Cereal/Gluten


Contains Milk


Does Not Contain Eggs


Does Not Contain Peanuts


Contains Nuts


Does Not Contain Crustaceans


Does Not Contain Mustard


Does Not Contain Fish


Does Not Contain Lupin


Does Not Contain Sesame


Does Not Contain Celery


Contains Soya


Does Not Contain Molluscs


Does Not Contain Sulphur Dioxide

Dietary Information

Key: Suitable for


Suitable for Vegetarian


May not be suitable for Vegan


May not be suitable for Kosher


May not be suitable for Halal


May not be suitable for Coeliac

Ingredients

MILK chocolate 30% (sugar,cocoa butter,cocoa mass,skimmed MILK powder,concentrated butter, emulsifier: lecithins (SOYA),vanillin),HAZELNUTS (28.5%),sugar,palm oil,WHEAT flour,whey powder (MILK),fat-reduced cocoa,emulsifier: lecithins (SOYA),raising agent (sodium bicarbonate),salt,vanillin