

The information on the [Erudus System](#) has been supplied by the manufacturers of the products and, whilst the owners of the Erudus System take steps to ensure the information is regularly updated, they give no warranty and no guarantee that the information is accurate. Product information and ingredients may change, please always read product labels carefully in addition to using the information provided by Erudus One.

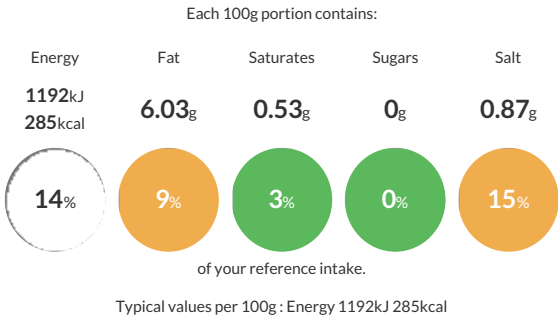
We do not accept liability for any inaccuracies or incorrect information contained on this site. Please visit <http://www.erudus.com/terms-and-conditions> for full terms and conditions.

MINT 6x120g

Mentha spicata L.; leaves of the plant, sun-dried, rubbed and separated from the stalks and other foreign bodies, cleaned according to its technique afterwards and steam treated.

Traded Unit GTIN: 5020933117540 Internal GTIN: 5020933111074 Supplier : Sleaford Quality Foods Suppliers Product Code : MINT120V

Reference Intake



Nutritional Information

Typical Values	Per 100g
Energy	1192kJ 285kCal
Carbohydrates	22.24g
of which sugars	0g
Fat	6.03g
of which saturates	0.53g
Fibre	29.8g
Protein	19.93g
Salt	0.87g

Allergy Information

Key: Contains May Contain

Gluten < 20ppm  
Does Not Contain Cereal/Gluten

Does Not Contain Milk

Does Not Contain Eggs

Does Not Contain Peanuts

Does Not Contain Nuts

Does Not Contain Crustaceans

Does Not Contain Mustard

Does Not Contain Fish

Does Not Contain Lupin

Does Not Contain Sesame

Does Not Contain Celery

Does Not Contain Soya

Does Not Contain Molluscs

Does Not Contain Sulphur Dioxide

**Gluten Claim**  
Gluten content is less than 20ppm.

Ingredients

Dried Spearmint

Dietary Information

Key: Suitable for

Suitable for Vegetarian

Suitable for Vegan

May not be suitable for Kosher

May not be suitable for Halal

Suitable for Coeliac