

The information on the [Erudus System](#) has been supplied by the manufacturers of the products and, whilst the owners of the Erudus System take steps to ensure the information is regularly updated, they give no warranty and no guarantee that the information is accurate. Product information and ingredients may change, please always read product labels carefully in addition to using the information provided by Erudus One.

We do not accept liability for any inaccuracies or incorrect information contained on this site. Please visit <http://www.erudus.com/terms-and-conditions> for full terms and conditions.

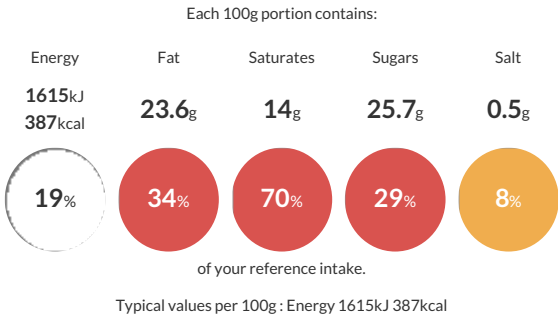
## Mini Victoria Sponges 18g (1 x 48)

Short Product Name:  
Mini Victoria Sponges 18g (1 x 48)

Victoria sponge cakes dusted with icing sugar and filled with raspberry jam and fresh double cream. Palm from a sustainable source, RSPO certificate number BMT-RSPO-000578 (1 x 48)

Traded Unit GTIN: **5060089681434** Internal GTIN: Supplier : **Central Foods Group Limited** Suppliers Product Code : **FDCAN51**

### Reference Intake




### Nutritional Information

Typical Values	Per 100g
Energy	1615kJ 387kCal
Carbohydrates	38.9g
of which sugars	25.7g
Fat	23.6g
of which saturates	14g
Fibre	1.4g
Protein	4.7g
Salt	0.5g

### Allergy Information

Key: **Contains** **May Contain**

  
Contains Cereal/Gluten


  
Contains Milk

  
Contains Eggs

  
Does Not Contain Peanuts

  
Does Not Contain Nuts

  
Does Not Contain Crustaceans

  
Does Not Contain Mustard

  
Does Not Contain Fish

  
Does Not Contain Lupin

  
Does Not Contain Sesame

  
Does Not Contain Celery

  
Does Not Contain Soya

  
Does Not Contain Molluscs

  
Does Not Contain Sulphur Dioxide

### Dietary Information

Key: **Suitable for**

  
Suitable for Vegetarian

  
May not be suitable for Vegan

  
May not be suitable for Kosher

  
May not be suitable for Halal

  
NO DATA for Coeliac

### Ingredients

Sponge Cake (Whole EGG, Butter (MILK), Caster Sugar, Fortified Self-Raising Flour (WHEAT Flour (with Calcium, Iron, Niacin, Thiamin)), Raising Agents (Sodium Carbonates, Calcium Phosphates)), Raspberry Jam (22%) (Glucose-Fructose Syrup, Raspberry, Sugar, Modified Maize Starch, Gelling Agent (Pectin), Acidity Regulators (Citric Acid, Sodium Citrates)), Whipped Cream (22%) (Double Cream (MILK), Caster Sugar, Vanilla), Snow Dusting (Dextrose, WHEAT Starch, Vegetable Oils (Palm, Rapeseed), Salt, Natural Flavouring).