

The information on the [Erudus System](#) has been supplied by the manufacturers of the products and, whilst the owners of the Erudus System take steps to ensure the information is regularly updated, they give no warranty and no guarantee that the information is accurate. Product information and ingredients may change, please always read product labels carefully in addition to using the information provided by Erudus One.

We do not accept liability for any inaccuracies or incorrect information contained on this site. Please visit <http://www.erudus.com/terms-and-conditions> for full terms and conditions.

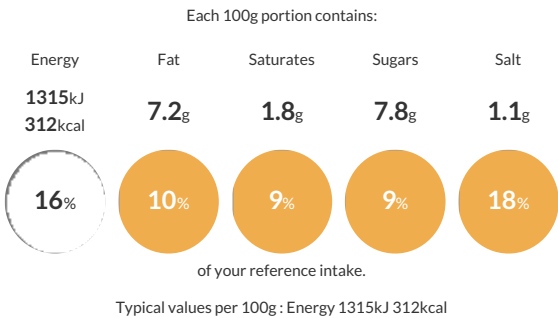
St Pierre 6 Brioche Buns Pre-Sliced x 7

Short Product Name:
St Pierre 6 Brioche Buns Pre-Sliced x 7

6 Pre-Sliced Brioche Buns

Traded Unit GTIN: 05027952012528 Internal GTIN: 5027952012511 Supplier : St Pierre Groupe Limited Suppliers Product Code : 37816

Reference Intake



Nutritional Information

Typical Values	Per 100g
Energy	1315kJ 312kCal
Carbohydrates	51g
of which sugars	7.8g
Fat	7.2g
of which saturates	1.8g
Fibre	1.7g
Protein	9.9g
Salt	1.1g

Allergy Information

Key: Contains May Contain


Contains Cereal/Gluten


Contains Milk


Contains Eggs


Does Not Contain Peanuts


Does Not Contain Nuts


Does Not Contain Crustaceans


Does Not Contain Mustard


Does Not Contain Fish


Does Not Contain Lupin


May Contain Sesame


Does Not Contain Celery


Does Not Contain Soya


Does Not Contain Molluscs


Does Not Contain Sulphur Dioxide

Dietary Information

Key: Suitable for


Suitable for Vegetarian


May not be suitable for Vegan


May not be suitable for Kosher


May not be suitable for Halal


NO DATA for Coeliac

Allergen Statement
May contain traces of Sesame Seeds.

Ingredients

Wheat Flour, Water, Egg, Sugar, Yeast, Rapeseed oil, Invert Sugar, Concentrated Butter (Milk), Flavouring, Dried Skimmed Milk, Salt, Wheat Gluten, Rye Flour, Emulsifier (Mono- and Diacetyl Tataric Acid Esters of Mono- and Diglycerides of Fatty Acids), Deactivated Yeast, Milk Proteins, Colour (Beta Carotene), Flour Treatment Agent (Absorbic Acid).

Wheat Flour, Water, Egg, Sugar, Rapeseed Oil, Invert Sugar Syrup, Yeast, Dried Skimmed Milk, Concentrated Butter (Milk), Wheat Gluten, Salt, Flavouring, Milk Proteins, Deactivated Yeast, Emulsifier (Mono- and Diglycerides of Fatty Acids), Toasted Malted Rye Flour, Colour (Beta Carotene).

Wheat Flour, Water, Sugar, Egg, Yeast, Rapeseed Oil, Wheat Gluten, Concentrated Butter (Milk), Malted Rye Flour, Milk Protein, Salt, Emulsifier (Mono- and Diglycerides of Fatty Acids), Invert Sugar, Dried Milk, Flavouring, Colour (Beta Carotene), Deactivated Yeast.