

The information on the [Erudus System](#) has been supplied by the manufacturers of the products and, whilst the owners of the Erudus System take steps to ensure the information is regularly updated, they give no warranty and no guarantee that the information is accurate. Product information and ingredients may change, please always read product labels carefully in addition to using the information provided by Erudus One.

We do not accept liability for any inaccuracies or incorrect information contained on this site. Please visit <http://www.erudus.com/terms-and-conditions> for full terms and conditions.

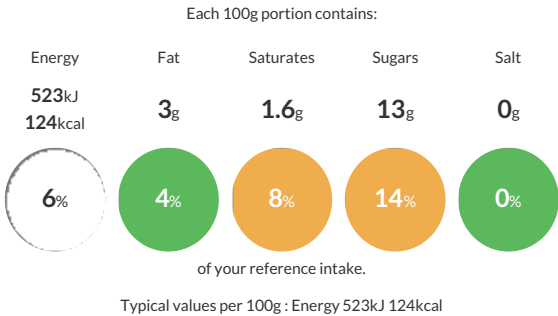
Brandy Sauce 12 x 1L

Short Product Name:
Brandy Sauce

An indulgent heat treated sauce made with a blend of milk, sugar and brandy (7%).

Traded Unit GTIN: 05017506471628 Internal GTIN: 5017506801623 Supplier : Macphie Ltd Suppliers Product Code: 10000153

Reference Intake



Nutritional Information

| Typical Values | Per 100g |
|--------------------|------------------|
| Energy | 523kJ 124kCal |
| Carbohydrates | 18g |
| of which sugars | 13g |
| Fat | 3g |
| of which saturates | 1.6g |
| Fibre | 0g |
| Protein | 2.5g |
| Salt | 0g |

Allergy Information

Key: Contains May Contain

Does Not Contain Cereal/Gluten

Contains Milk

Does Not Contain Eggs

Does Not Contain Peanuts

Does Not Contain Nuts

Does Not Contain Crustaceans

Does Not Contain Mustard

Does Not Contain Fish

Does Not Contain Lupin

Does Not Contain Sesame

Does Not Contain Celery

Does Not Contain Soya

Does Not Contain Molluscs

Does Not Contain Sulphur Dioxide

Gluten Claim
Gluten content is less than 20ppm.

Allergen Statement
Contains: Milk

Ingredients

Reconstituted Skimmed Milk, Sugar, Water, Brandy (7%), Modified Starch, Vegetable Oil (Palm), Flavouring, Emulsifier (Mono- and diglycerides of fatty acids), Colours (Plain Caramel, Carotene).

Dietary Information

Key: Suitable for

Suitable for Vegetarian

May not be suitable for Vegan

May not be suitable for Kosher

May not be suitable for Halal

Suitable for Coeliac