

The information on the [Erudus System](#) has been supplied by the manufacturers of the products and, whilst the owners of the Erudus System take steps to ensure the information is regularly updated, they give no warranty and no guarantee that the information is accurate. Product information and ingredients may change, please always read product labels carefully in addition to using the information provided by Erudus One.

We do not accept liability for any inaccuracies or incorrect information contained on this site. Please visit <http://www.erudus.com/terms-and-conditions> for full terms and conditions.

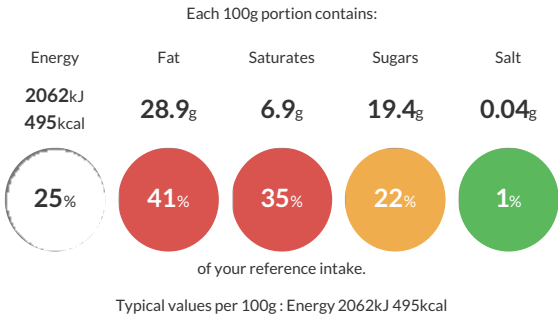
YES! Protein DBCL+Cashew+Blub 45g

Short Product Name:
YES! Cashew Blueberry & Dark Chocolate Plant Protein Nut Bar 45g

PEANUT, ALMOND & CASHEW WITH CRISPED PEA PROTEIN, PUMPKIN SEEDS, SWEETENED BLUEBERRIES & DARK CHOCOLATE

Traded Unit GTIN: 7613037985634 Internal GTIN: 7613037985627 Supplier : Nestle UK Suppliers Product Code : 12424272

Reference Intake



Nutritional Information

Typical Values	Per 100g
Energy	2062kJ 495kCal
Carbohydrates	31.1g
of which sugars	19.4g
Fat	28.9g
of which saturates	6.9g
Fibre	9.6g
Protein	22.8g
Salt	0.04g

Allergy Information

Key: Contains May Contain


Does Not Contain Cereal/Gluten


Contains Milk


May Contain Eggs


Contains Peanuts


Contains Nuts


Does Not Contain Crustaceans


Does Not Contain Mustard


Does Not Contain Fish


Does Not Contain Lupin


Does Not Contain Sesame


Does Not Contain Celery


May Contain Soya


Does Not Contain Molluscs


Does Not Contain Sulphur Dioxide

Allergen Statement
Contains: ALMONDS, CASHEW NUTS, PEANUTS and MILK. May contain: other TREE NUTS, EGG and SOYA

Ingredients

Roasted PEANUTS (21%), Pea protein (13%), Dark chocolate (12%) (Cocoa mass, Sugar, Fat-reduced cocoa powder, Cocoa butter, MILK fat, Emulsifier (Lecithins)), Pumpkin seeds (10%), Sweetened dried blueberries (Blueberries (5%), Sugar), Chicory root fibre, ALMONDS (6.5%), Glucose syrup, Honey, CASHEW NUT halves (6%), Tapioca starch, Sunflower oil, Natural flavouring, Emulsifier (Lecithins)

Dietary Information

Key: Suitable for


Suitable for Vegetarian


May not be suitable for Vegan


May not be suitable for Kosher


May not be suitable for Halal


Suitable for Coeliac