

The information on the [Erudus System](#) has been supplied by the manufacturers of the products and, whilst the owners of the Erudus System take steps to ensure the information is regularly updated, they give no warranty and no guarantee that the information is accurate. Product information and ingredients may change, please always read product labels carefully in addition to using the information provided by Erudus One.

We do not accept liability for any inaccuracies or incorrect information contained on this site. Please visit <http://www.erudus.com/terms-and-conditions> for full terms and conditions.

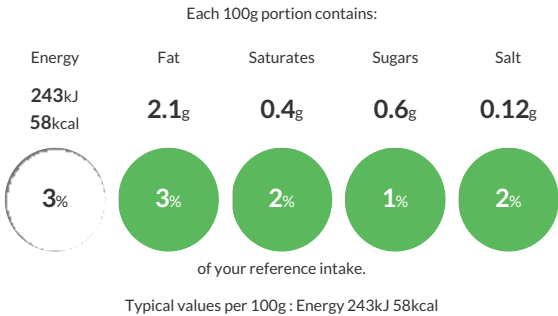
Blue Dragon extra firm silken tofu 12x308g

Short Product Name:
Extra firm silken tofu

Extra firm silken tofu

Traded Unit GTIN: 05015612000992 Internal GTIN: 5010338000486 Supplier : AB World Foods Limited Suppliers Product Code : 220105

Reference Intake



Nutritional Information

| Typical Values | Per 100g |
|--------------------|-----------------|
| Energy | 243kJ 58kCal |
| Carbohydrates | 1.1g |
| of which sugars | 0.6g |
| Fat | 2.1g |
| of which saturates | 0.4g |
| Fibre | 0.8g |
| Protein | 8.2g |
| Salt | 0.12g |

Allergy Information

Key: Contains May Contain


Does Not Contain Cereal/Gluten


Does Not Contain Milk


Does Not Contain Eggs


May Contain Peanuts


May Contain Nuts


Does Not Contain Crustaceans


Does Not Contain Mustard


Does Not Contain Fish


Does Not Contain Lupin


Does Not Contain Sesame


Does Not Contain Celery


Contains Soya


Does Not Contain Molluscs


Does Not Contain Sulphur Dioxide

Allergen Statement
For allergens, see ingredients in bold. May also contain peanuts and nuts.

Ingredients

Water, **Soya** Beans (15%), Isolated **Soya** Protein (4%), Acidity Regulator (Glucono-Delta-Lactone), Firming Agent (Calcium Chloride).

Dietary Information

Key: Suitable for


Suitable for Vegetarian


Suitable for Vegan


May not be suitable for Kosher


May not be suitable for Halal


NO DATA for Coeliac