

Supplier's Product Code :
Product Added :
Last Updated by Supplier :
erudus id :

012250P
25 November 2024
25 November 2024
3a13590ca41f4836b8d549b301cb3f5d



The information on the [Erudus System](#) has been supplied by the manufacturers of the products and, whilst the owners of the Erudus System take steps to ensure the information is regularly updated, they give no warranty and no guarantee that the information is accurate. Product information and ingredients may change, please always read product labels carefully in addition to using the information provided by Erudus One.

We do not accept liability for any inaccuracies or incorrect information contained on this site. Please visit <http://www.erudus.com/terms-and-conditions> for full terms and conditions.

Purple Pineapple Chicken Mayonnaise and Sweetcorn 1kg

Short Product Name:

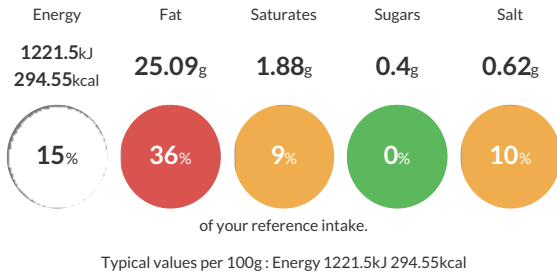
Chicken Mayonnaise and Sweetcorn

Diced chicken breast blended with free range real mayonnaise and sweetcorn

Traded Unit GTIN: Internal GTIN: Supplier: Suppliers Product Code:

Reference Intake

Each 100g portion contains:



Nutritional Information

| Typical Values | Per 100g |
|--------------------|------------------------|
| Energy | 1221.5kJ 294.55kCal |
| Carbohydrates | 3.91g |
| of which sugars | 0.4g |
| Fat | 25.09g |
| of which saturates | 1.88g |
| Fibre | 1.02g |
| Protein | 13.1g |
| Salt | 0.62g |

Allergy Information

Key: Contains May Contain



Dietary Information

Key: Suitable for



Ingredients

Cooked Chicken 45% (Chicken, Salt) Free Range Real Mayonnaise 40% (Rapeseed Oil, Water, Sugar, Modified Maize Starch, Free Range EGG Yolk Powder, Stabiliser (Xanthan Gum), Salt, Preservatives (Acetic Acid, Potassium Sorbate), Colour (Lutein); Sweetcorn 15% (Sweetcorn, Water, Sugar, Salt, Citric Acid).