

The information on the [Erudus System](#) has been supplied by the manufacturers of the products and, whilst the owners of the Erudus System take steps to ensure the information is regularly updated, they give no warranty and no guarantee that the information is accurate. Product information and ingredients may change, please always read product labels carefully in addition to using the information provided by Erudus One.

We do not accept liability for any inaccuracies or incorrect information contained on this site. Please visit <http://www.erudus.com/terms-and-conditions> for full terms and conditions.

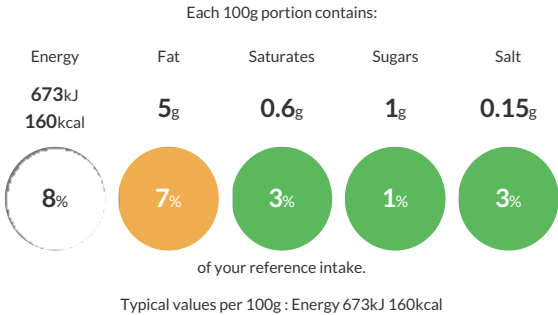
Aviko SuperCrunch Crinkle 10x750g

Short Product Name:
Extra crispy coated crinkle cut fries, pre-fried and quick-frozen.

Extra crispy coated crinkle cut fries, pre-fried and quick-frozen. 12 x 12 mm crinkle. This product is made of potatoes which are washed, sorted, peeled, cut, blanched, dried, coated, prefried in vegetable oil, quick frozen and packed.

Traded Unit GTIN: 8710449948482 Internal GTIN: 8710449948475 Supplier : Aviko Suppliers Product Code : 807676

Reference Intake



Nutritional Information

Typical Values	Per 100g
Energy	673kJ 160kCal
Carbohydrates	25g
of which sugars	1g
Fat	5g
of which saturates	0.6g
Fibre	2.5g
Protein	2.5g
Salt	0.15g

Allergy Information

Key: Contains May Contain


Does Not Contain Cereal/Gluten


Does Not Contain Milk


Does Not Contain Eggs


Does Not Contain Peanuts


Does Not Contain Nuts


Does Not Contain Crustaceans


Does Not Contain Mustard


Does Not Contain Fish


Does Not Contain Lupin


Does Not Contain Sesame


Does Not Contain Celery


Does Not Contain Soya


Does Not Contain Molluscs


Does Not Contain Sulphur Dioxide

Dietary Information

Key: Suitable for


Suitable for Vegetarian


Suitable for Vegan


May not be suitable for Kosher


May not be suitable for Halal


NO DATA for Coeliac

Ingredients

Potatoes, sunflower oil, modified potato starch, rice flour, dextrin, raising agent (E450, E500), maltodextrin, thickener (E415).