

The information on the [Erudus System](#) has been supplied by the manufacturers of the products and, whilst the owners of the Erudus System take steps to ensure the information is regularly updated, they give no warranty and no guarantee that the information is accurate. Product information and ingredients may change, please always read product labels carefully in addition to using the information provided by Erudus One.

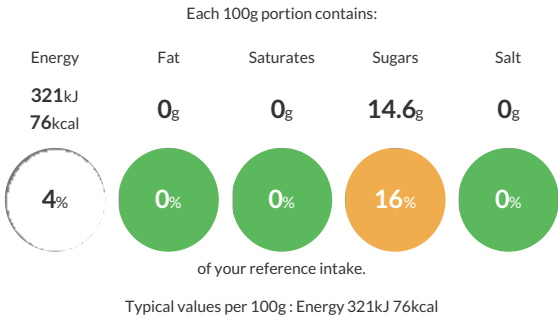
We do not accept liability for any inaccuracies or incorrect information contained on this site. Please visit <http://www.erudus.com/terms-and-conditions> for full terms and conditions.

## Frozen Fruit puree with added sugar: Strawberry (1kg)

The puree is obtained from fresh fruits picked at maturity whose the pulp is extracted by crushing and refining. Raw materials batches are blended to ensure a quality and continuous taste.

Traded Unit GTIN: **63389133000019** Internal GTIN: **3389133000017** Supplier : **Boiron Freres (Les Vergers Boiron)** Suppliers Product Code : **AFA1C6AA0**

### Reference Intake



### Nutritional Information

Typical Values	Per 100g
Energy	321kJ 76kCal
Carbohydrates	18.1g
of which sugars	14.6g
Fat	0g
of which saturates	0g
Fibre	1.3g
Protein	0.2g
Salt	0g

### Allergy Information

Key: **Contains** **May Contain**

  
Gluten < 20ppm  
Does Not Contain Cereal/Gluten

  
Does Not Contain Milk

  
Does Not Contain Eggs

  
Does Not Contain Peanuts

  
Does Not Contain Nuts

  
Does Not Contain Crustaceans

  
Does Not Contain Mustard

  
Does Not Contain Fish

  
Does Not Contain Lupin

  
Does Not Contain Sesame

  
Does Not Contain Celery

  
Does Not Contain Soya

  
Does Not Contain Molluscs

  
Does Not Contain Sulphur Dioxide

**Gluten Claim**  
Gluten content is less than 20ppm.

**Allergen Statement**  
With added sugars

### Ingredients

Strawberry 85%, invert sugar syrup 15%.

### Dietary Information

Key: **Suitable for**

  
Suitable for Vegetarian

  
Suitable for Vegan

  
Suitable for Kosher

  
Suitable for Halal

  
Suitable for Coeliac