

The information on the [Erudus System](#) has been supplied by the manufacturers of the products and, whilst the owners of the Erudus System take steps to ensure the information is regularly updated, they give no warranty and no guarantee that the information is accurate. Product information and ingredients may change, please always read product labels carefully in addition to using the information provided by Erudus One.

We do not accept liability for any inaccuracies or incorrect information contained on this site. Please visit <http://www.erudus.com/terms-and-conditions> for full terms and conditions.

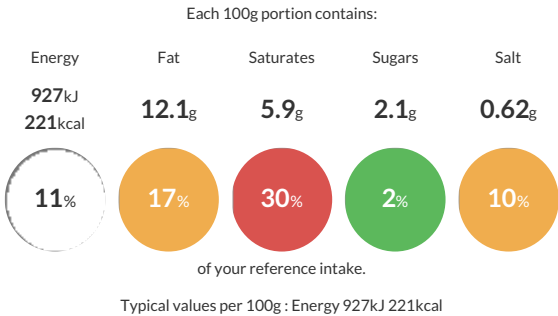
Quiche Lorraine 11" (1 x 1)

Short Product Name:
Quiche Lorraine 11" (1 x 1)

Whole quiche made with egg, bacon and mature Cheddar cheese encased in shortcrust pastry (approx. 12 ptns). Palm from a sustainable source, RSPO certificate number BMT-RSPO-000578 (1 x 1)

Traded Unit GTIN: 05060062473766 Internal GTIN: Supplier: Central Foods Group Limited Suppliers Product Code: MSQW020

Reference Intake



Nutritional Information


Typical Values	Per 100g
Energy	927kJ 221kCal
Carbohydrates	21.7g
of which sugars	2.1g
Fat	12.1g
of which saturates	5.9g
Fibre	0.8g
Protein	7g
Salt	0.62g

Allergy Information


Key: Contains May Contain


Contains Cereal/Gluten



Contains Milk


Contains Eggs


Does Not Contain Peanuts



Does Not Contain Nuts



Does Not Contain Crustaceans


Contains Mustard



Does Not Contain Fish


Does Not Contain Lupin


Does Not Contain Sesame


Does Not Contain Celery


Does Not Contain Soya


Does Not Contain Molluscs


Does Not Contain Sulphur Dioxide

Dietary Information

Key: Suitable for


May not be suitable for Vegetarian


May not be suitable for Vegan


May not be suitable for Kosher


May not be suitable for Halal


NO DATA for Coeliac

Ingredients

Pastry Case: Fortified **WHEAT** Flour (**WHEAT** Flour, Calcium Carbonate, Iron, Niacin, Folic Acid, Thiamin), Margarine (Palm Oil, Coconut Oil, Rapeseed Oil, Water, Salt, Emulsifier (Mono- and Diglycerides of Fatty Acids), Acidity Regulators (Citric Acid, Disodium Citrate), Natural Flavouring, Colour (Natural Carotenes)), Shortening (Palm Oil, Rapeseed Oil), Maize Flour, Water, Tomato Puree, Sea Salt.

Filling: Water, Whole Liquid **EGG** (13%) Bacon (7%) (Pork, Salt, Demerara Sugar, Sodium Nitrite) Mature White Cheddar Cheese (5%) (**MILK**, Salt, Starter, Rennet, Potato Starch), Whole **MILK** Powder, Cornflour, Modified Maize Starch, Onion, **MUSTARD** Powder, Ground White Pepper.