

The information on the [Erudus System](#) has been supplied by the manufacturers of the products and, whilst the owners of the Erudus System take steps to ensure the information is regularly updated, they give no warranty and no guarantee that the information is accurate. Product information and ingredients may change, please always read product labels carefully in addition to using the information provided by Erudus One.

We do not accept liability for any inaccuracies or incorrect information contained on this site. Please visit <http://www.erudus.com/terms-and-conditions> for full terms and conditions.

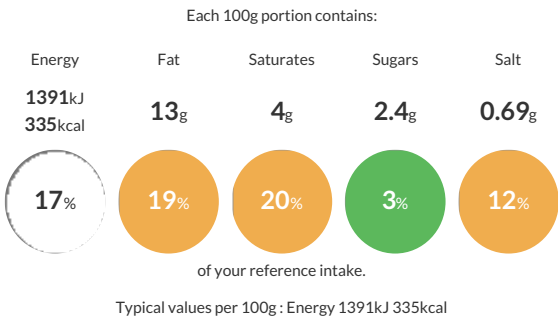
Sysco Classic Whole Cloves

Short Product Name:
Whole Cloves

Whole Cloves

Traded Unit GTIN: 05024333195740 Internal GTIN: 5024333195733 Supplier : Sysco GB Limited Suppliers Product Code : 84810

Reference Intake



Nutritional Information

Typical Values	Per 100g
Energy	1391kJ 335kCal
Carbohydrates	32g
of which sugars	2.4g
Fat	13g
of which saturates	4g
Fibre	34g
Protein	6g
Salt	0.69g

Allergy Information

Key: Contains May Contain


Does Not Contain Cereal/Gluten


Does Not Contain Milk


Does Not Contain Eggs


Does Not Contain Peanuts


Does Not Contain Nuts


Does Not Contain Crustaceans


Does Not Contain Mustard


Does Not Contain Fish


Does Not Contain Lupin


Does Not Contain Sesame


Does Not Contain Celery


Does Not Contain Soya


Does Not Contain Molluscs


Does Not Contain Sulphur Dioxide

Dietary Information

Key: Suitable for


Suitable for Vegetarian


Suitable for Vegan


NO DATA for Kosher


NO DATA for Halal


NO DATA for Coeliac

Ingredients

Cloves