

Supplier's Product Code : 136123
 Product Added : 04 March 2026
 Last Updated by Supplier : 04 March 2026
 erudus id : 3d170f91544948e88ee0e55f3cdf01ad



The information on the **Erudus System** has been supplied by the manufacturers of the products and, whilst the owners of the Erudus System take steps to ensure the information is regularly updated, they give no warranty and no guarantee that the information is accurate. Product information and ingredients may change, please always read product labels carefully in addition to using the information provided by Erudus One.

We do not accept liability for any inaccuracies or incorrect information contained on this site. Please visit <http://www.erudus.com/terms-and-conditions> for full terms and conditions.

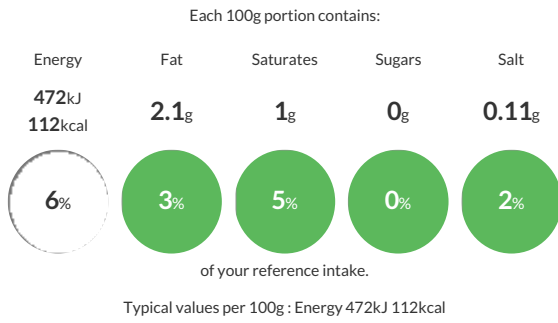
Sysco Classic Beef Topside Joint

Short Product Name:
 Beef Topside Joint

Beef Topside Joint

Traded Unit GTIN: **5024333264873** Internal GTIN: Supplier: **Sysco GB Limited** Suppliers Product Code: **136123**

Reference Intake



Nutritional Information

Typical Values	Per 100g
Energy	472kJ 112kCal
Carbohydrates	0g
of which sugars	0g
Fat	2.1g
of which saturates	1g
Fibre	-g
Protein	23g
Salt	0.11g

Allergy Information

Key: **Contains** **May Contain**

Does Not Contain Cereal/Gluten	Does Not Contain Milk	Does Not Contain Eggs	Does Not Contain Peanuts	Does Not Contain Nuts	Does Not Contain Crustaceans	Does Not Contain Mustard
Does Not Contain Fish	Does Not Contain Lupin	Does Not Contain Sesame	Does Not Contain Celery	Does Not Contain Soya	Does Not Contain Molluscs	Does Not Contain Sulphur Dioxide

Dietary Information

Key: **Suitable for**

NO DATA for Vegetarian	NO DATA for Vegan	NO DATA for Kosher	NO DATA for Halal	NO DATA for Coeliac
------------------------	-------------------	--------------------	-------------------	---------------------

Ingredients

Beef