

The information on the [Erudus System](#) has been supplied by the manufacturers of the products and, whilst the owners of the Erudus System take steps to ensure the information is regularly updated, they give no warranty and no guarantee that the information is accurate. Product information and ingredients may change, please always read product labels carefully in addition to using the information provided by Erudus One.

We do not accept liability for any inaccuracies or incorrect information contained on this site. Please visit <http://www.erudus.com/terms-and-conditions> for full terms and conditions.

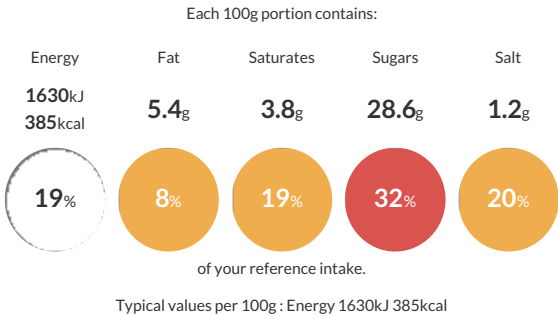
Plain Muffin Mix (2020 Sugar Compliant) 4 x 3.5kg

Short Product Name:  
Plain Muffin Mix

A Rich Plain Muffin mix suitable for individual Muffins or Muffin Loaf also suitable for adding Fruit Pieces or Choc Chips.

Traded Unit GTIN: 5028081010713 Internal GTIN: Supplier : Middleton Foods Ltd Suppliers Product Code: CM0008TW

Reference Intake



Nutritional Information

Typical Values	Per 100g
Energy	1630kJ 385kCal
Carbohydrates	75g
of which sugars	28.6g
Fat	5.4g
of which saturates	3.8g
Fibre	2g
Protein	8.7g
Salt	1.2g

Allergy Information

Key: Contains May Contain

  
Contains Cereal/Gluten

  
Contains Milk

  
Contains Eggs

  
Does Not Contain Peanuts

  
Does Not Contain Nuts

  
Does Not Contain Crustaceans

  
Does Not Contain Mustard

  
Does Not Contain Fish

  
Does Not Contain Lupin

  
Does Not Contain Sesame

  
Does Not Contain Celery


  
May Contain Soya


  
Does Not Contain Molluscs


  
Does Not Contain Sulphur Dioxide


Dietary Information


Key: Suitable for

  
Suitable for Vegetarian

  
May not be suitable for Vegan

  
Suitable for Kosher

  
Suitable for Halal

  
NO DATA for Coeliac

Ingredients

WHEAT Flour (WHEAT, Calcium, Iron, Niacin, Thiamin), Sugar, Dried Whole EGG Powder, Palm Oil, Raising Agents (E450(i), E500(iii)), Butter MILK Powder, Flavouring, Thickener (Xanthan Gum).