

Supplier's Product Code :
Product Added :
Last Updated by Supplier :
erudus id :

135638
28 April 2022
04 May 2022
41922350d7174f7d978299b94d067c8c



The information on the Erudus System has been supplied by the manufacturers of the products and, whilst the owners of the Erudus System take steps to ensure the information is regularly updated, they give no warranty and no guarantee that the information is accurate. Product information and ingredients may change, please always read product labels carefully in addition to using the information provided by Erudus One.

We do not accept liability for any inaccuracies or incorrect information contained on this site. Please visit <http://www.erudus.com/terms-and-conditions> for full terms and conditions.

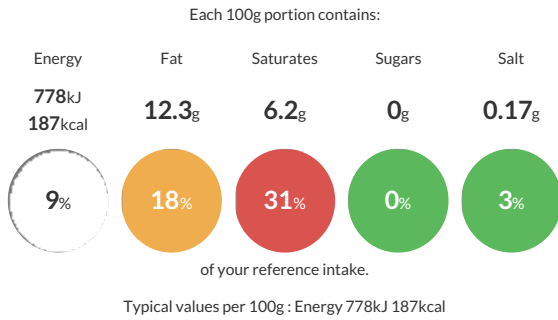
D Cut Lamb Rump (10 x 180-220g)

Short Product Name:
D Cut Lamb Rump

The remaining portion of the Hindquarter after removing the Saddle, removing each leg individually by splitting the aitches and by a straight cut from just below the cod fat to the base of the tail passing. Below the round of the aitch bone curved round to leave the tail on the saddle. All bones will be removed, and the resultant joint rolled and tied.

Traded Unit GTIN: 5060821751142 Internal GTIN: Supplier: John Sheppard Butchers Limited Suppliers Product Code: 135638

Reference Intake



Nutritional Information

Typical Values	Per 100g
Energy	778kJ 187kCal
Carbohydrates	0g
of which sugars	0g
Fat	12.3g
of which saturates	6.2g
Fibre	0g
Protein	19g
Salt	0.17g

Allergy Information

Key: **Contains** **May Contain**



Dietary Information

Key: **Suitable for**



Ingredients

Lamb