

The information on the [Erudus System](#) has been supplied by the manufacturers of the products and, whilst the owners of the Erudus System take steps to ensure the information is regularly updated, they give no warranty and no guarantee that the information is accurate. Product information and ingredients may change, please always read product labels carefully in addition to using the information provided by Erudus One.

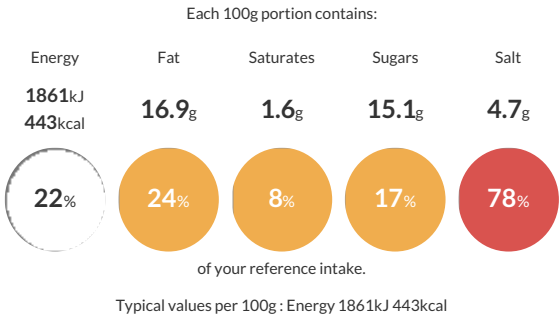
We do not accept liability for any inaccuracies or incorrect information contained on this site. Please visit <http://www.erudus.com/terms-and-conditions> for full terms and conditions.

MAGGI BECHAMEL SAUCE 2X2KG

Short Product Name:  
MAGGI® Bechamel Sauce-2kg  
  
Dehydrated Bechamel sauce

Traded Unit GTIN: 8445291559707 Internal GTIN: 8445291559714 Supplier : Nestle UK Suppliers Product Code : 12626135

Reference Intake



Nutritional Information

Typical Values	Per 100g
Energy	1861kJ 443kCal
Carbohydrates	64g
of which sugars	15.1g
Fat	16.9g
of which saturates	1.6g
Fibre	1g
Protein	8.1g
Salt	4.7g

Allergy Information

Key: Contains May Contain

  
Contains  
Cereal/Gluten

  
Contains  
Milk

  
May Contain  
Eggs

  
Does Not  
Contain  
Peanuts

  
Does Not  
Contain  
Nuts

  
Does Not  
Contain  
Crustaceans

  
May Contain  
Mustard

  
Does Not  
Contain  
Fish

  
Does Not  
Contain  
Lupin

  
Does Not  
Contain  
Sesame

  
May Contain  
Celery

  
May Contain  
Soya

  
Does Not  
Contain  
Molluscs

  
Does Not  
Contain  
Sulphur  
Dioxide

Dietary Information

Key: Suitable for

  
Suitable for  
Vegetarian

  
May not be  
suitable for  
Vegan

  
May not be  
suitable for  
Kosher

  
May not be  
suitable for  
Halal

  
NO DATA for  
Coeliac

Ingredients

Ingredients: corn starch, **WHEAT** flour, sunflower oil, maltodextrin, skimmed **MILK** powder, sugar, iodised salt (salt, potassium iodate), lactose (**MILK**), yeast extract, **MILK** protein, salt, flavourings (**MILK**, **BARLEY**, **WHEAT**), acid (citric acid), onion.