

The information on the [Erudus System](#) has been supplied by the manufacturers of the products and, whilst the owners of the Erudus System take steps to ensure the information is regularly updated, they give no warranty and no guarantee that the information is accurate. Product information and ingredients may change, please always read product labels carefully in addition to using the information provided by Erudus One.

We do not accept liability for any inaccuracies or incorrect information contained on this site. Please visit <http://www.erudus.com/terms-and-conditions> for full terms and conditions.

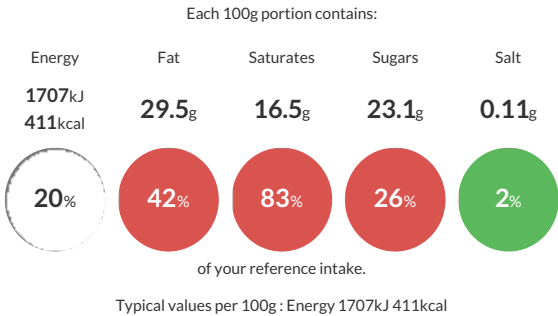
Chocolate slice

Short Product Name:
Chocolate slice

Chocolate Joconde biscuit, chocolate crunch with 59% cocoa chocolate, chocolate cream and chocolate mousse made with 71% cocoa chocolate, chocolate icing.

Traded Unit GTIN: 03700478531996 Internal GTIN: 03700478531996 Supplier : Traiteur De Paris Suppliers Product Code : 000210 (0319901)

Reference Intake



Nutritional Information

Typical Values	Per 100g
Energy	1707kJ 411kCal
Carbohydrates	27.4g
of which sugars	23.1g
Fat	29.5g
of which saturates	16.5g
Fibre	4.5g
Protein	6.7g
Salt	0.11g

Allergy Information

Key: Contains May Contain


Contains Cereal/Gluten


Contains Milk


Contains Eggs


May Contain Peanuts


May Contain Nuts


May Contain Crustaceans


May Contain Mustard


Contains Fish


May Contain Lupin


May Contain Sesame


May Contain Celery


Contains Soya


May Contain Molluscs


May Contain Sulphur Dioxide

Dietary Information

Key: Suitable for


May not be suitable for Vegetarian


May not be suitable for Vegan


May not be suitable for Kosher


May not be suitable for Halal


May not be suitable for Coeliac

Ingredients

Cream (MILK cream, stabiliser: E407), dark chocolate [71% cocoa] 16.3% (cocoa mass, sugar, cocoa butter, natural vanilla flavour),EGG yolk, semi-skimmed MILK, joconde cocoa 8,8% (whole EGGS, sugar, WHEAT flour (GLUTEN), cocoa powder, water, inverted sugar, roasted malted BARLEY flour (GLUTEN), pea flour, baking powder : E450 – E500 (contains WHEAT starch (GLUTEN)), emulsifier : E471., potato flour, MILK proteins), chocolate frosting 7,9% (vegetable fat (sunflower oil, coconut, cocoa butter, palm oil), sugar, powdered reduced fat cocoa, cocoa paste, emulsifier: SOYA lecithin., natural vanilla flavour), dark chocolate coating [59% cocoa] 4.9% (cocoa paste, sugar, cocoa butter, emulsifier: SOYA lecithin.), dark frosting (vegetable fat (palm, shea), sugar, reduced fat cocoa powder, lactose, emulsifier: SOYA lecithin., natural vanilla flavour), sugar, whole EGG, pancakes chips (WHEAT flour (GLUTEN), sugar, concentrated butter (MILK), skimmed MILK powder, BARLEY malt (GLUTEN), salt), sunflower oil, cocoa butter, water, gelling preparation (FISH gelatine, potato maltodextrine).